



# Integrated Funding Panel: Strategies for Sustaining New Investments in Student Health & Education

**Lisa Eisenberg**, Child & Youth Health Financing Project Director, WestEd

**Scott Ostendorf**, Project Manager: Student Behavioral Health Incentive Program (SBHIP),  
Marin County Office of Education

**Marni R. Sandoval**, Deputy Director of Behavioral Health, Child and Adolescent Services,  
County of Monterey Health Department

**Jonathan Barnett Tugbenyoh**, Director of School Partnerships, Seneca Family of Agencies



# Integrated Funding Panel

**Strategies for Sustaining New  
Investments in Student Health**

**Breaking Barriers – November 16**



---

# Introductions

**Lisa Eisenberg, Child & Youth Health Financing Project  
Director, WestEd**

**Jonathan Barnett Tugbenyoh, Director of School  
Partnerships, Seneca Family of Agencies**

**Marni R. Sandoval, Deputy Director of Behavioral Health,  
Child and Adolescent Services; County of Monterey Health  
Department**

**Scott Ostendorf, Project Manager: Student Behavioral  
Health Incentive Program (SBHIP), Marin County Office of  
Education**

## What is Integrated Funding?

*“State and local leaders must thoughtfully and collectively weave together this abundance of resources in order to sustainably support programs and services so families can get what they need, when they need it.”*

-CYBHI Ecosystem Working Paper



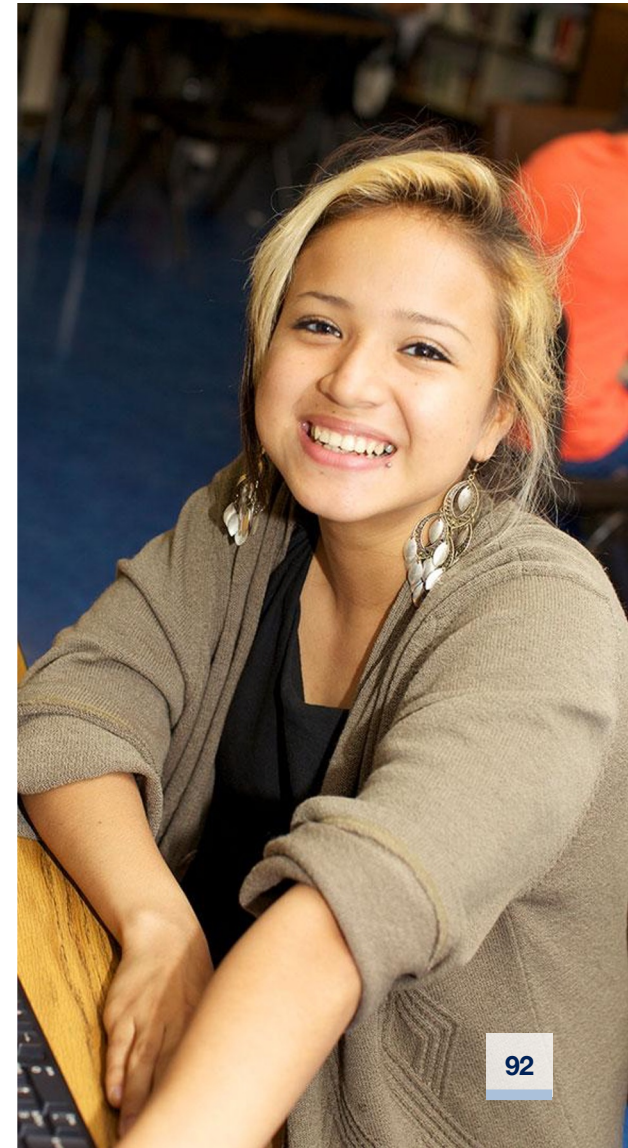
Blending



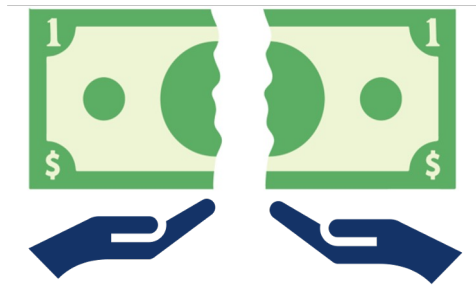
Braiding



Partnering



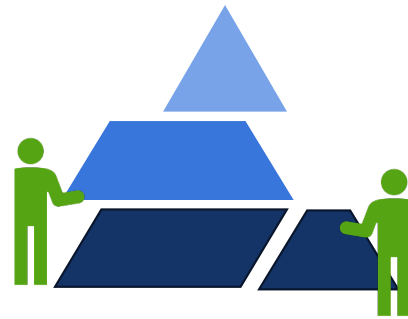
## Integrated Funding as...



Match



Supplement



Leverage



Maximize



---

# Panelist Questions

## Why is Integrated Funding Important?

- Sustain one-time investments
- Maintain services that are student- and family-centered
- Avoid an over-reliance on billing





**Lisa Eisenberg**  
[leisenb@wested.org](mailto:leisenb@wested.org)

**Jonathan Barnett Tugbenyoh**  
[jonathan\\_bt@senecacenter.org](mailto:jonathan_bt@senecacenter.org)

**Marni R. Sandoval**  
[sandovalmr@co.monterey.ca.us](mailto:sandovalmr@co.monterey.ca.us)

**Scott Ostendorf**  
[sostendorf@marinschools.org](mailto:sostendorf@marinschools.org)

