



PANEL: Building Shared Leadership in a County to Lessen the Chaos in the Field

Twylla Abrahamson, Director, Placer County Children's System of Care

Lindsay Alderette, Program Manager - Whole Person Learning, YES Program

Luke Anderson, Executive Director, Prevention Supports and Services,
Placer County Office of Education

Jina Coronado, MCT Family Advocate, Cal Voices, Placer County Children's System of Care

Indira Infante, Program Manager, Cal Voices, Placer County Children's System of Care

Mike Lombardo, Education Advisor, Consultant

Honorable Colleen Nichols, Superior Court Judge, Placer County

Brian Passenheim, Assistant Chief Probation Officer, Placer County Probation

Placer County Children's System of Care

Identifying & Building a Leadership Team to Set Vision and Mission that Includes Youth and Families

Building Shared Leadership in a County to Lessen the Chaos in the Field

Placer Team

Honorable Colleen Nichols, Superior Court

Twylla Abrahamson, Director, Placer County Children's System of Care

Lindsay Alderette, Program Manager, Whole Person Learning, YES Program

Luke Anderson, Executive Director, Placer County Office of Education

Jina Coronado, MCT Family Advocate, Cal Voices

Indira Infante, Program Manager, Cal Voices

Brian Passenheim, Probation Manager

Michael Lombardo, Health and Education Advisor, Consultant

Today's Objectives

1. Overview and History of the Placer Children's System of Care
2. Understand why we are organized the way we are.
3. System of Care Principles to support integration - Vision, Structure, and Outcomes.
4. Impact on Youth and Families



What is the Placer Children's System of Care?

An integrated collaboration of Child Welfare, Behavioral Health, Probation, Education and Youth / Family Partners working to improve outcomes for Children and Families

System of Care History in Placer

Established in 1988 to support integrated services in Placer County. □Established in Welfare & Institutions Code 18986.60 (Assembly Bill 2547)

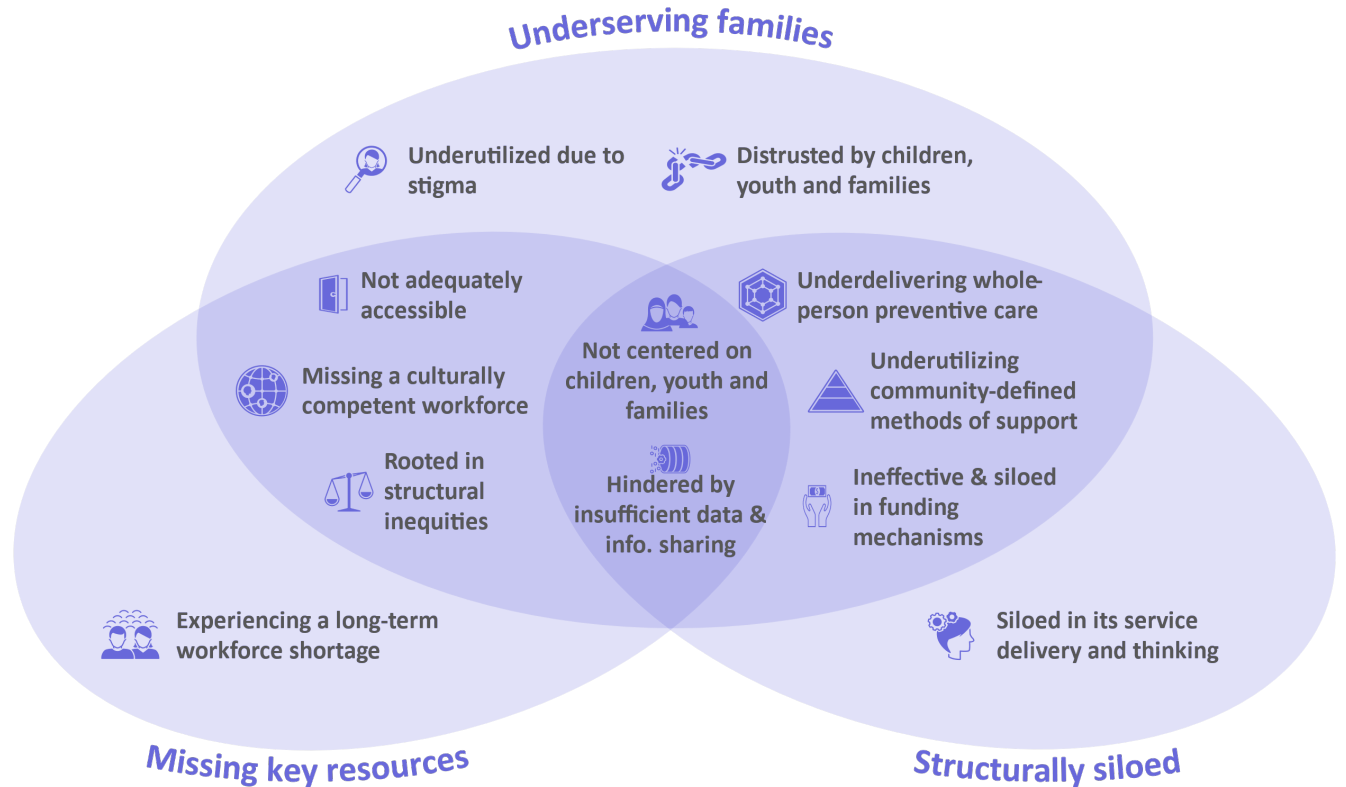
Superior Court Initiated weekly meetings to address the system challenges occurring due to siloed processes, decision making and funding.

Vision of children being safe, healthy, at home, in school, out of trouble and economically stable.

Our system should work to ensure children will have access to the services they need. No wrong door.

Findings CA Ecosystem:




CA's current child/youth behavioral health system is...



Working Paper: California's Children & Youth Behavioral Health Ecosystem




Placer will use the recommendations of the Ecosystem Paper "Necessary Components" to present how we organize our system of care.



 Vision, mindset and culture	 Structure, organization and resources	 Function, process and outcomes
<ul style="list-style-type: none">✓ Clear shared vision by, for and with children and families✓ Communities and families empowered as partners to elevate their interests✓ Commitment to address root issues of structural inequity	<ul style="list-style-type: none">✓ Integrated approach to child wellbeing and alignment across the ecosystem✓ Capacity building, technical support, and research agenda for initiating and building local ecosystems of care✓ Larger, culturally responsive and congruent behavioral health workforce	<ul style="list-style-type: none">✓ Community-defined shared outcomes, accountability and continuous improvement✓ Data and info sharing processes and tools✓ Effective approaches to integrated funding to maximize impact✓ Coordinated care navigation for youth, students and families

Working Paper: California's Children & Youth Behavioral Health Ecosystem

Using the necessary components for a redesigned ecosystem to tell how Placer has organized work for Children and Families

 Vision, mindset and culture	 Structure, organization and resources	 Function, process and outcomes
<ul style="list-style-type: none"> ✓ Clear shared vision by, for and with children and families ✓ Communities and families empowered as partners to elevate their interests ✓ Commitment to address root issues of structural inequity 	<ul style="list-style-type: none"> ✓ Integrated approach to child wellbeing and alignment across the ecosystem ✓ Capacity building, technical support, and research agenda for initiating and building local ecosystems of care ✓ Larger, culturally responsive and congruent behavioral health workforce 	<ul style="list-style-type: none"> ✓ Community-defined shared outcomes, accountability and continuous improvement ✓ Data and info sharing processes and tools ✓ Effective approaches to integrated funding to maximize impact ✓ Coordinated care navigation for youth, students and families

Vision, mindset and culture

Twylla Abrahamson

Indira Infante

Lindsay Alderette

Jina Coronado



Vision, mindset and culture

- ✓ Clear shared vision by, for and with children and families
- ✓ Communities and families empowered as partners to elevate their interests
- ✓ Commitment to address root issues of structural inequity

Clear shared vision by, for and with children and families

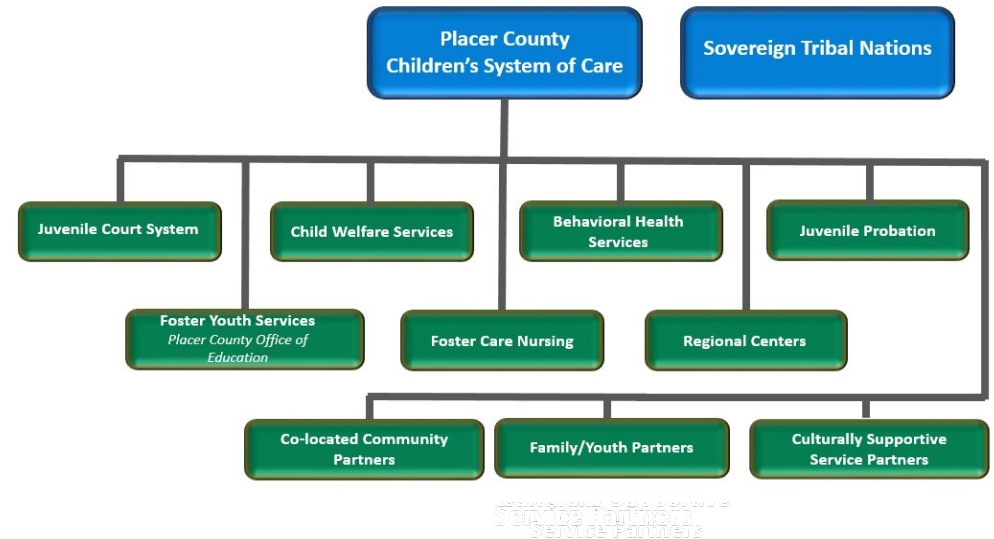
Mission / Vision:

All children, adults and families in Placer County will be self-sufficient in keeping themselves, their children, and their families SAFE, HEALTHY, AT HOME, IN SCHOOL OR EMPLOYED, OUT OF TROUBLE, ECONOMICALLY STABLE and CULTURALLY SUPPORTED.

Memorandum of Understanding

Signed 1988 and Updated every two years since

Now, it also serves as SB 2083 MOU



Communities and Families empowered to elevate their interest

- Family and Youth Integrated into the System of Care at all levels, including:
 - Executive Leadership
 - Management
 - Integrated Child and Family Teaming



Commitment to address the root and structural inequity

- Family Resource Community Collaborative (FRCC)
- Formerly known as the Systems Management Team, Placement Review Team and AIA.
- Policy Team includes both Family and Youth Representatives
- Integration of Family and Youth at all levels of Decision Making
- Participation in Management and Team Integrated Teams



Structure, Organization and Resources

Indira Infante

Luke Anderson

Brian Passenheim



Structure, organization and resources



Integrated approach
to child wellbeing and
alignment across the
ecosystem



Capacity building,
technical support,
and research agenda
for initiating and
building local
ecosystems of care



Larger, culturally
responsive and
congruent behavioral
health workforce

Integrated approach to child well-being and alignment across the ecosystem - Examples

Placer County Probation

- Crisis Resolution Center
- Probation staff participate in Cross-disciplinary teams, CSEC, Wraparound, Functional Family Tx

Placer County Office of Education:

- **Integrated Teams: CSEC Prevention, Red Team, Wellness Center Leadership, MHSA Integrated Services, MHSSA Wellness Centers**

Capacity building, technical support, and research agenda for initiating and building a local ecosystem of care

- Realization that an integrated Ecosystem (System of Care) is not just a theory but needs to be part of legacy development and skill building.
- Example:
 - Placer County Office of Education
 - Collaborative Integrated Hiring Processes
- Research and Data-Based Decision Making is an ongoing and aspirational endeavor



Larger, culturally responsive and congruent behavioral health workforce.

Multi-Disciplinary Approach
Cross-Functional Proficiency
Trauma Informed
Multi-Lingual System



Structure, Organization and Resources

Michael Lombardo

Twylla Abrahamson

Luke Anderson



Function, process and outcomes

- ✓ Community-defined shared outcomes, accountability and continuous improvement
- ✓ Data and info sharing processes and tools
- ✓ Effective approaches to integrated funding to maximize impact
- ✓ Coordinated care navigation for youth, students and families

Community-defined shared outcomes, accountability to continuous improvement

Vision: All Children and Families will be Safe, Healthy, At Home, In School/Employed, Out of Trouble, Economically Stable, and Culturally Supported.

Mission: The SMART Policy Team shall ensure that all public programs for children and families will provide services in a culturally responsive, comprehensive and integrated manner, regardless of the agency door by which families enter.

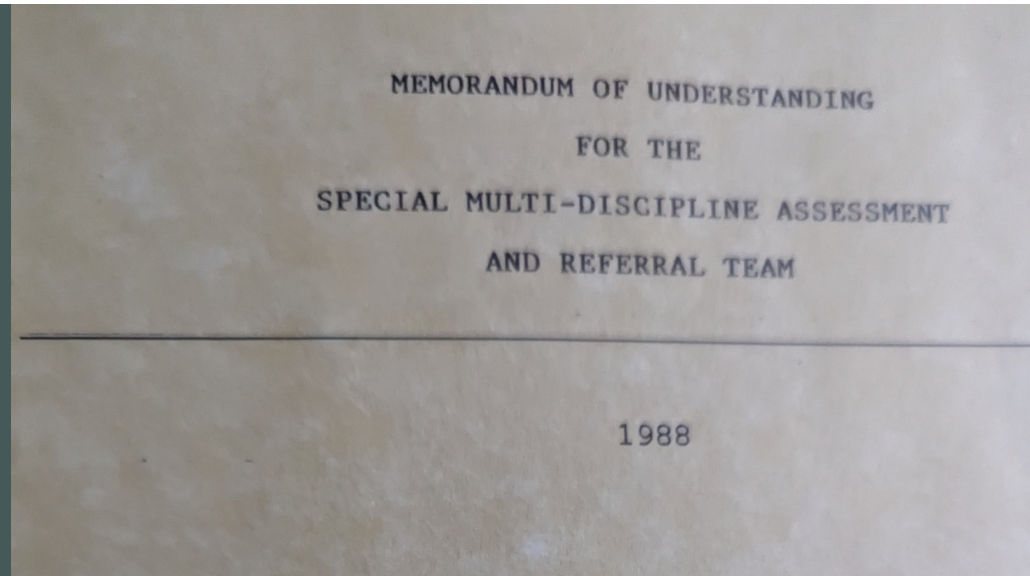
Effective approaches to integrated funding to maximize impact

- Placer Crisis Resolution Center an example of integrated funding
- Integrated Mental Health and Education Funding
 - CSEC, SARB, School Mental Health, Foster Youth (Title IVE)
- Child Welfare and Mental Health in all the above areas and more.....



Data and information sharing process and tools

- Continuous MOU since 1988 to integrate services and share information
- Use data for decisions at administrative and team level.
- Multiagency outcome screen for:
 - Safe, Healthy, At Home, In School, and Out of Trouble



Coordinated care navigation for children, youth and families

- County Agency Level - SMART
- Family Resource Community Collaborative
 - Management Team
 - Integrated Systems Team



Questions or Comments

