



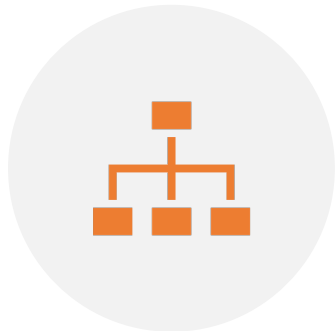
# Redefining Self in a Context of Whole Child Leadership

Richard Knecht, Managing Partner, Integrated Human Services

The background is a dark grey-blue gradient with a pattern of diagonal lines and circles. The lines are of varying lengths and thicknesses, creating a sense of motion and depth. The circles are also of varying sizes and are some are solid while others are dashed. The overall effect is a modern, geometric, and somewhat abstract design.

*The Self in the System:  
Whole Child Leadership*

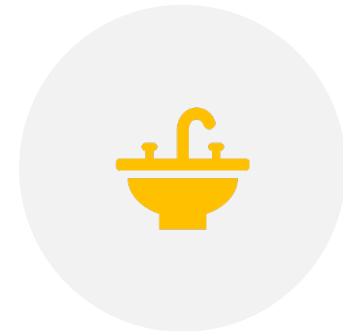
## *Some Us-ness...*



IN TWOS OR THREES....



"I AM....  
AND ONE GIFT I BRING TO THIS WORK IS..."

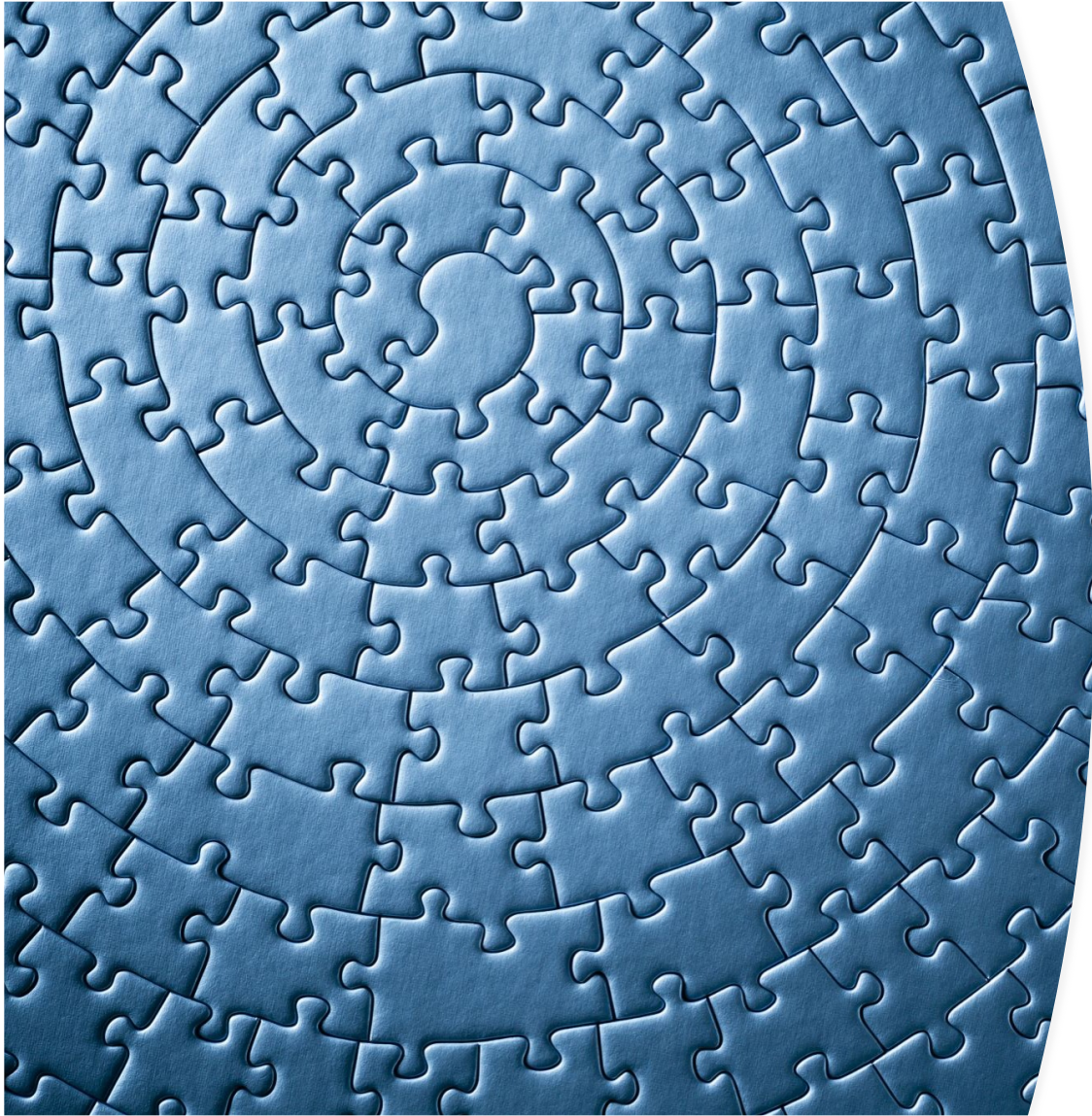


RECEIVE WITH APPRECIATION; RINSE AND  
REPEAT.

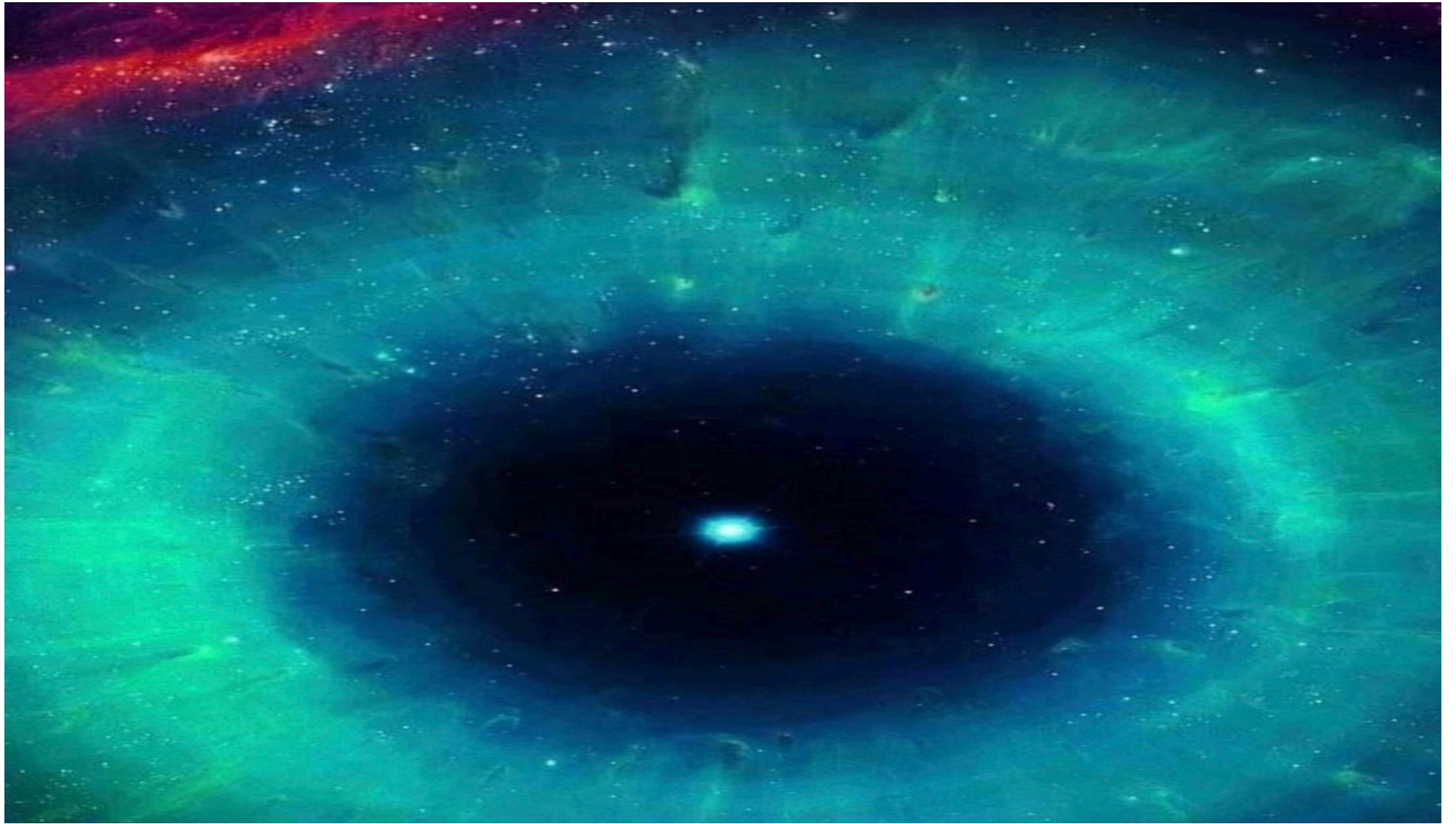


## *Three Guiding Questions...*

- What is wholeness?
- Why does it matter to our work?
- How do we achieve it?



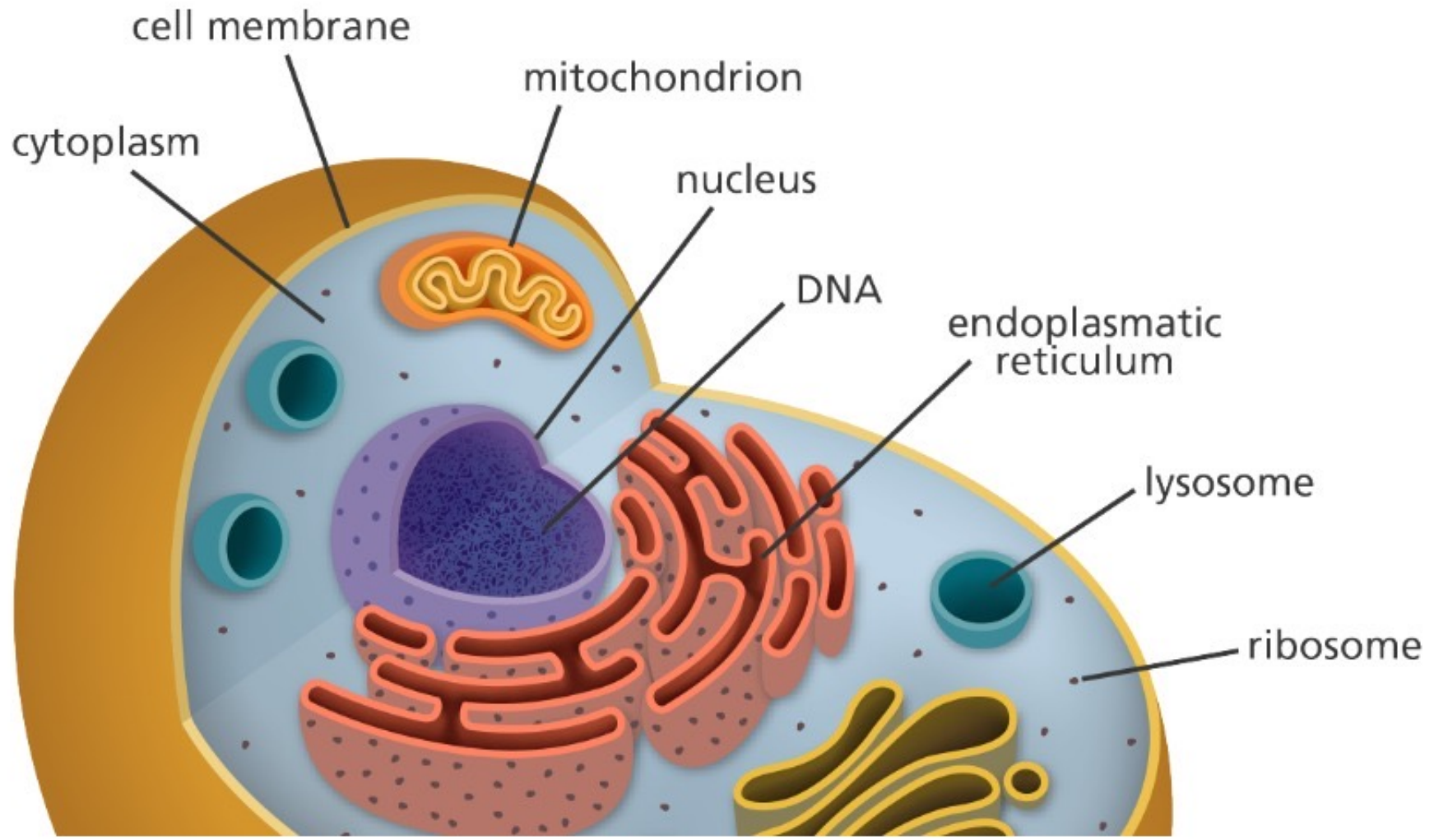
*INTEGRATION*

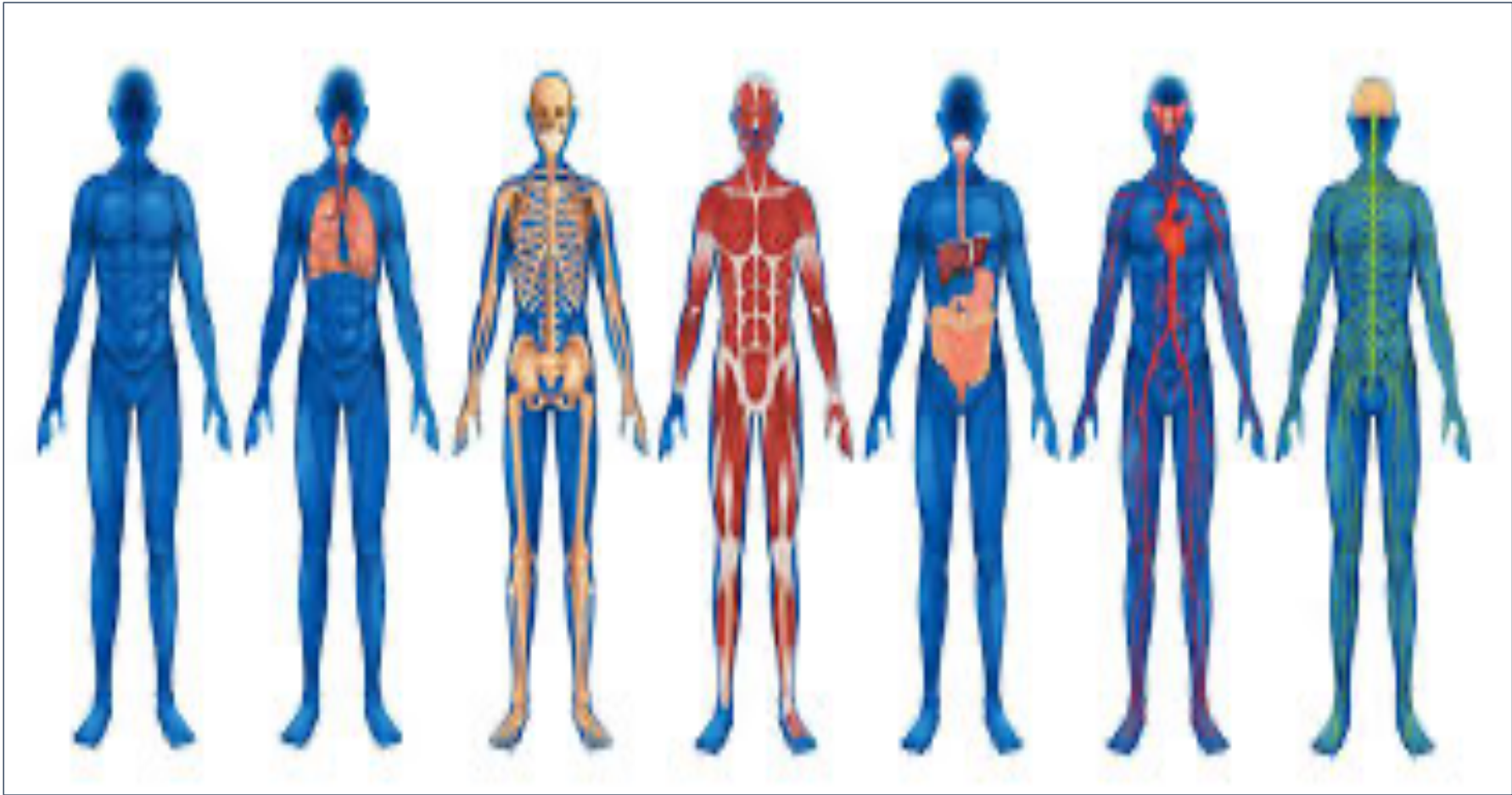


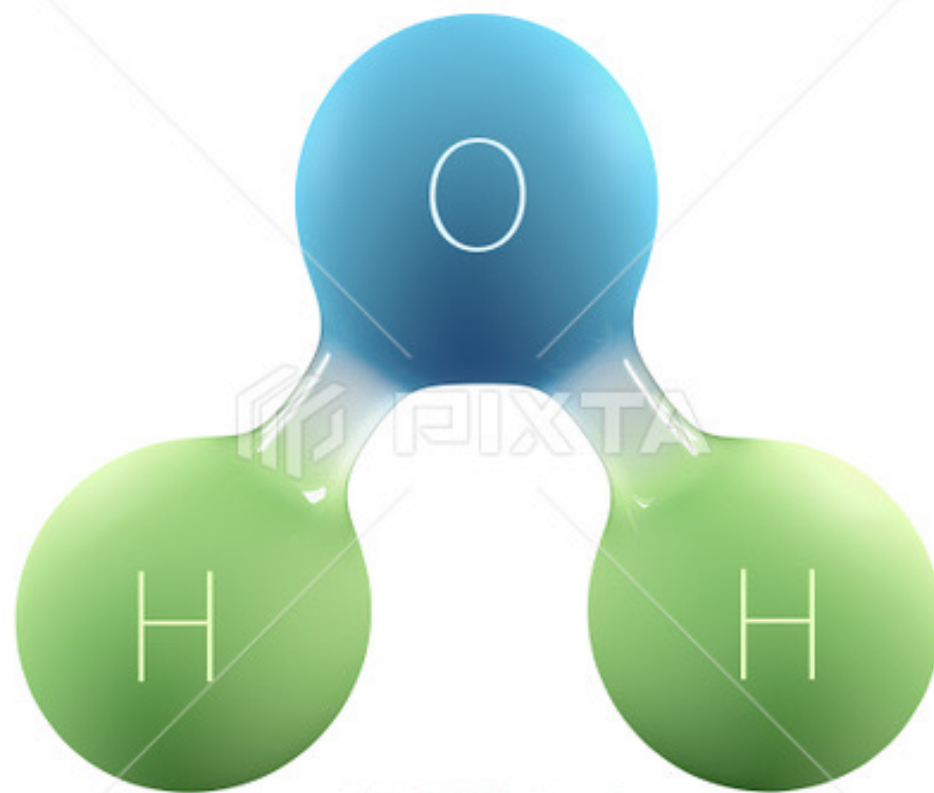




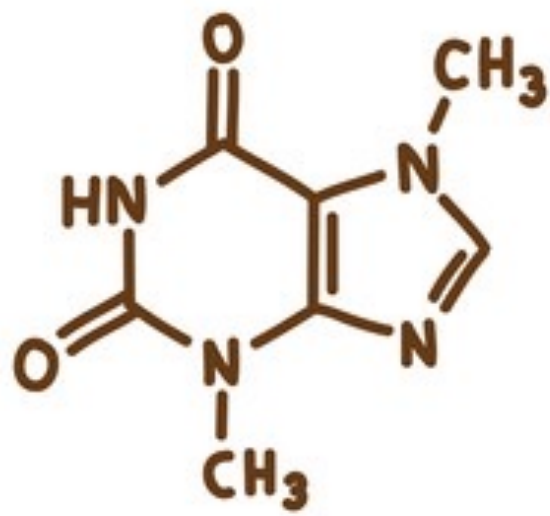








WATER H<sub>2</sub>O





**A**

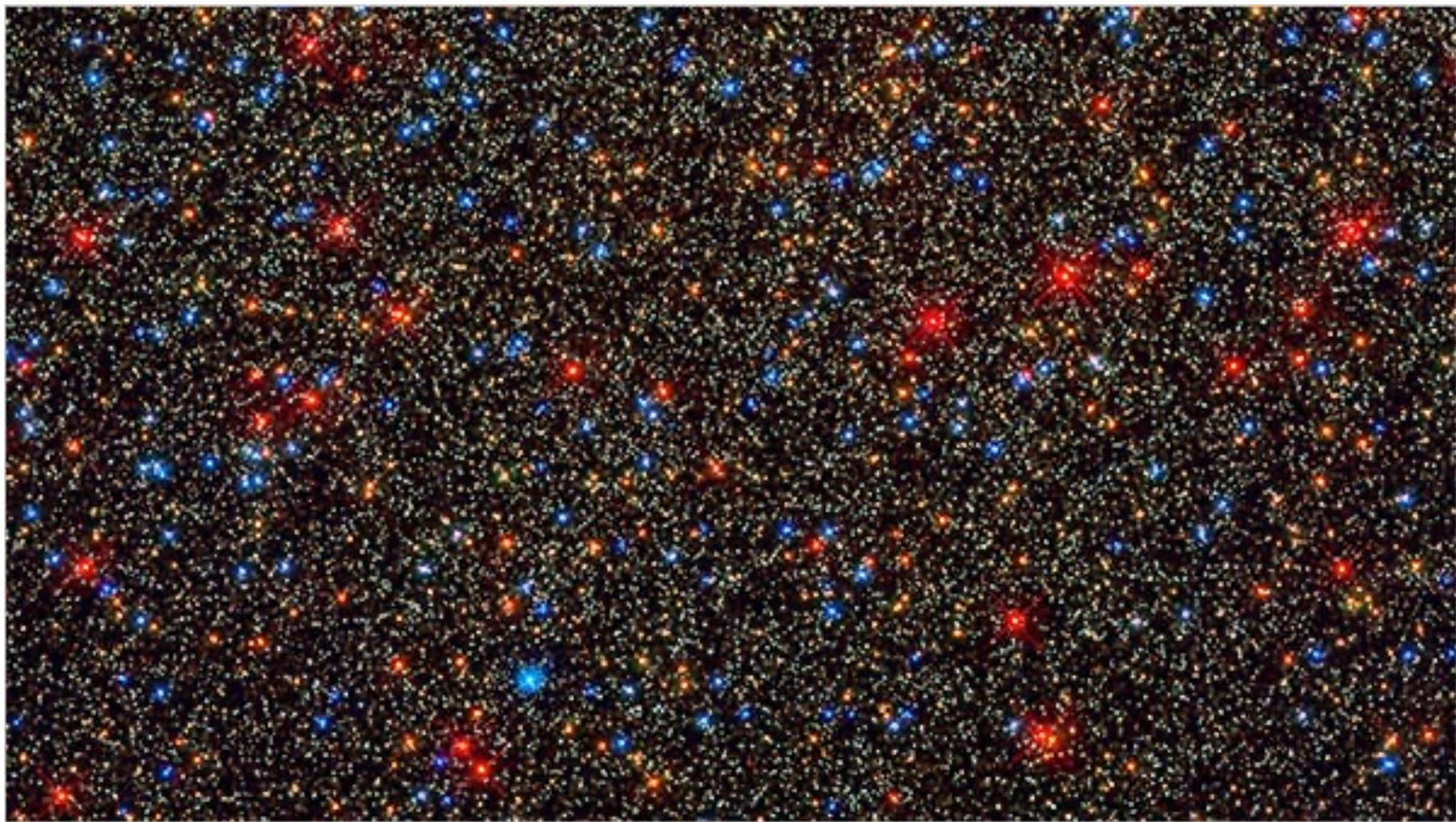
Section A of the musical score, featuring a treble clef and a key signature of one sharp (F#). The music is written in 4/4 time. The upper staff contains a melodic line with eighth notes and rests, starting with a forte (*f*) dynamic. The lower staff contains a bass line with eighth notes and rests, starting with a fortissimo (*ff*) dynamic. The score consists of five measures.

**B**

Section B of the musical score, featuring a treble clef and a key signature of one sharp (F#). The music is written in 4/4 time. The upper staff contains a melodic line with eighth notes and rests, starting with a forte (*f*) dynamic. The lower staff contains a bass line with eighth notes and rests, starting with a fortissimo (*ff*) dynamic. The score consists of five measures.





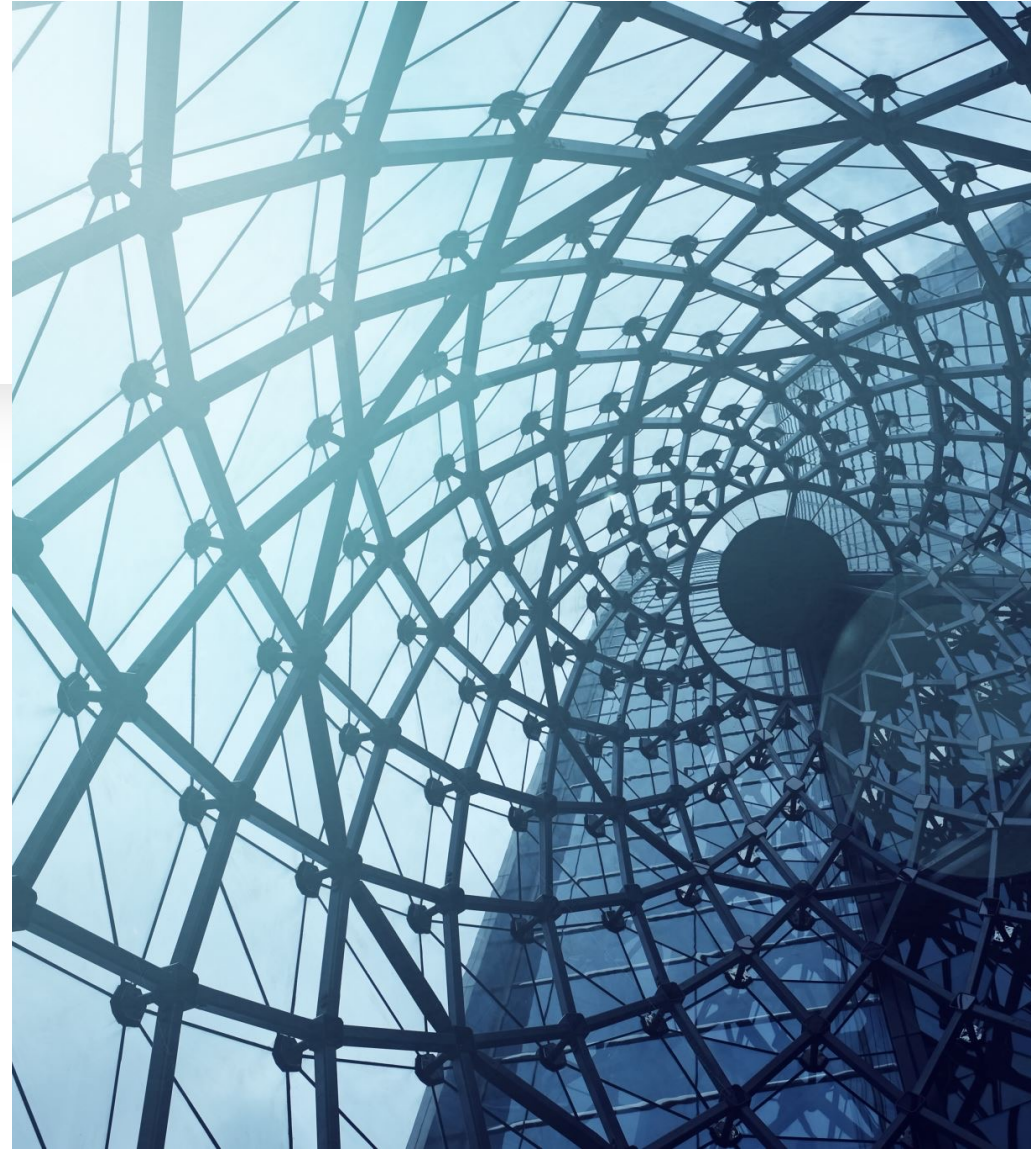




Transformative Oneness  
demands...

- 1. Integrated Vision and Mindset***
- 2. Integrated and Singular Structure***
- 3. Integrated Functions and Processes***

--Working Paper, California's  
Children and Youth Behavioral Health Ecosystem, Page 16

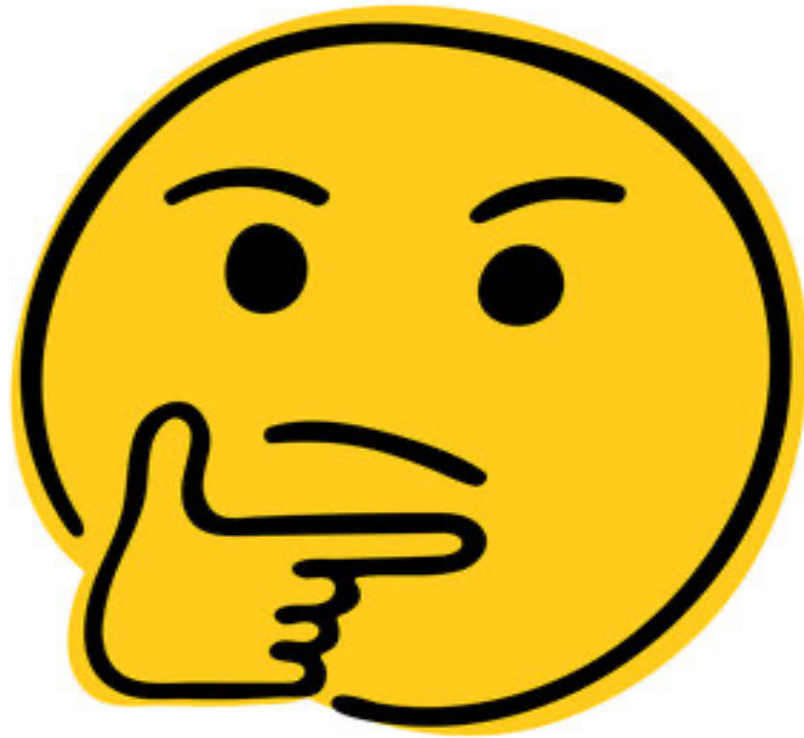





"We can never "see" another as a person, as to "see another" would be to see *the very separateness that is antithetical to personhood*. A person is not an individual but a relation. Relation is the actual encounter wherein the distinction between Me and Other (or Us and Them) evaporates.

*It is the moment where I move beyond seeing."*

*--Jim Ferrell, The Anatomy of Peace*





# Spiritual Intelligence (SQ)...

1. Self-awareness: Knowing what I believe in and value, and what deeply motivates me.
2. Holism: Seeing larger patterns, relationships, and connections; having a sense of belonging.
3. Compassion: Having the quality of "feeling-with" and deep empathy.
4. Field independence: Standing against the crowd and having one's own convictions.
5. Ability to reframe: Standing back from a situation or problem and seeing the bigger picture or wider context.

---Danah Zohar





System ~~x~~



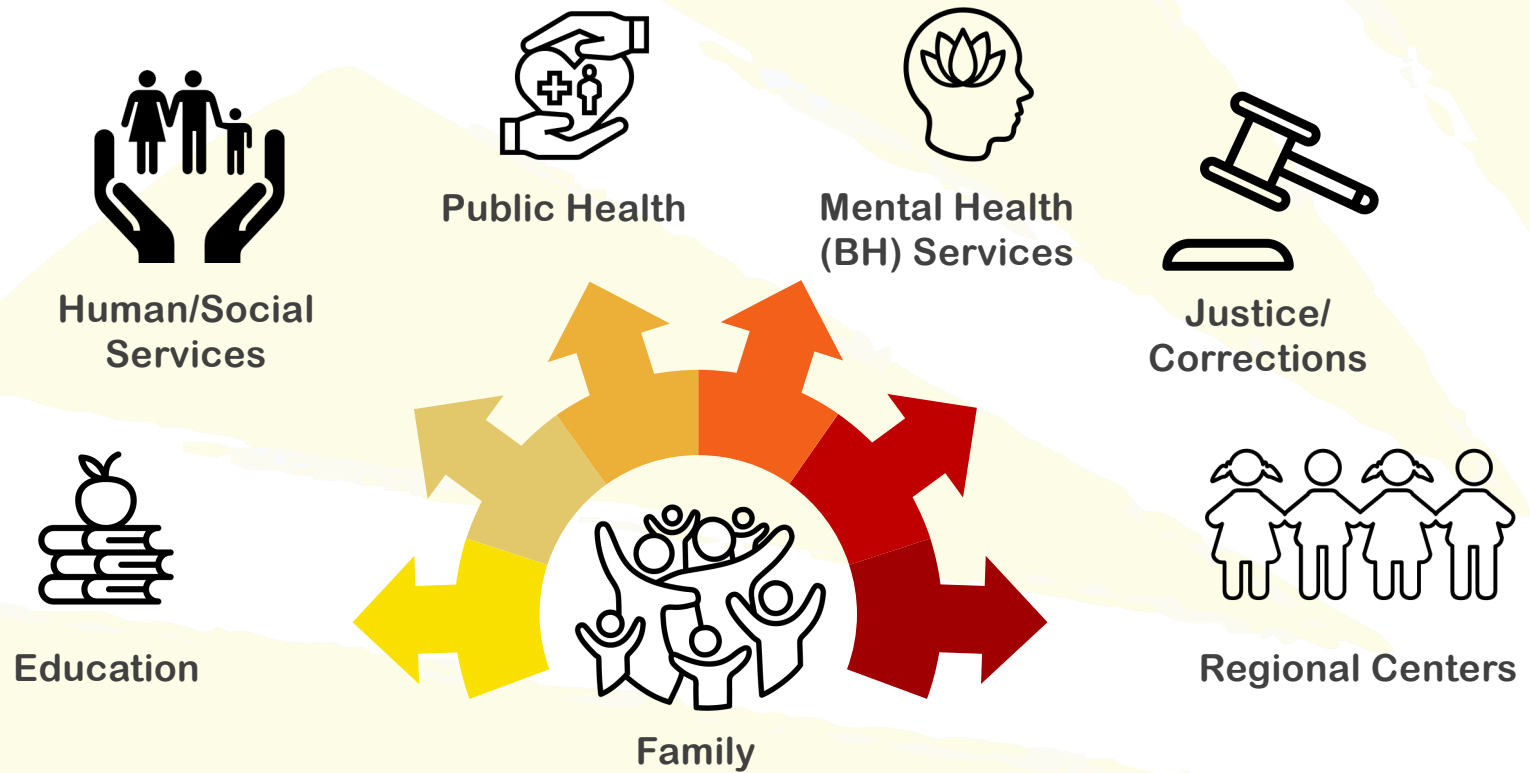
A healing formulary...

Relationships > Rules





# "Department of Health and Human Wellbeing"



A large field of black umbrellas, with one bright yellow umbrella standing out in the center. The text "Distinct, but not Separate!" is overlaid on the yellow umbrella.

Distinct, but not Separate!

# Integrated (Singular and Whole)



*Vision and  
Mindset*



*Structure*



*Functions and  
Processes*









