

Placer County Children System of Care

Moderator:

Rick Saletta

Panelists:

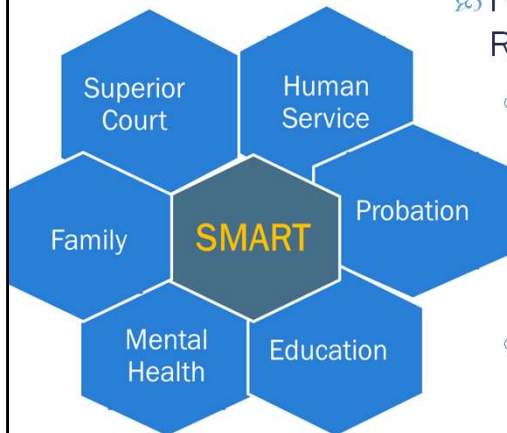
Colleen Nichols – Superior Court Judge

Twylla Abrahamson – Director, Children System of Care

Michael Lombardo – Executive Director, Placer County Office of Education

Placer County Children System of Care

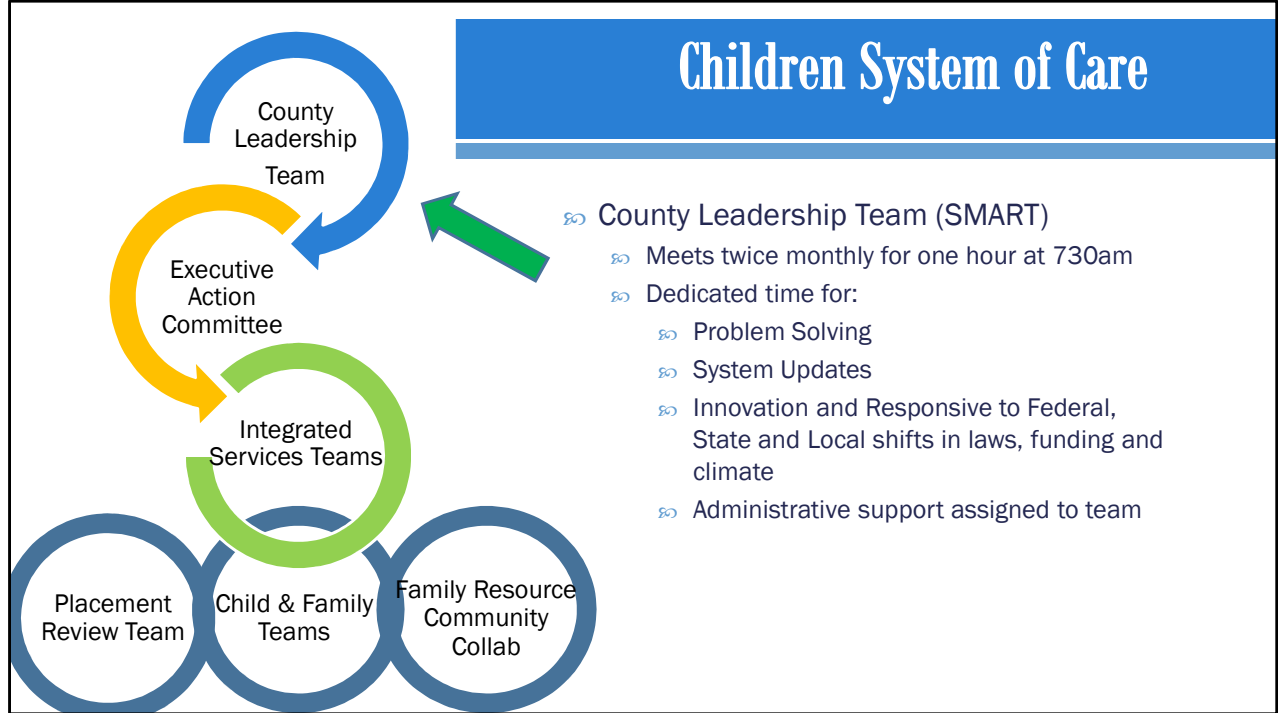
Model of Integrated Collaborative Multidisciplinary Team



- ∞ Formed in 1988 System Management Advocacy Resource Team (SMART)
 - Collaboration between Human Services, Child Welfare, Mental Health, Education, Family Partnership and Probation
 - Multiple Integrated Teams, Programs and Partnerships
 - Focus on strength based integrated solutions

Question 1

1. Tell us briefly about your interagency leadership team composition and its process as it relates to your project/shared program. (5 minutes)
 - a. Which agencies participate formally?
 - b. How long have your partners been meeting in this manner?
 - c. How often and for how long do the meetings last?
 - d. How do you support those meetings administratively?



Question 1

Tell us briefly about your interagency leadership team composition and its process as it relates to your project/shared program. (5 minutes)

Which agencies participate formally?

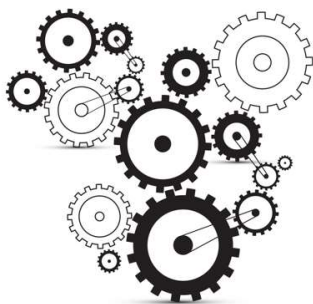
How long have your partners been meeting in this manner?

How often and for how long do the meetings last?

How do you support those meetings administratively?

Current Opportunities to Respond and Innovate

Integrated System



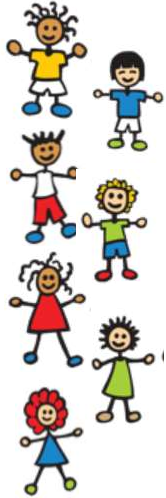
- ☞ Continuum of Care Reform
- ☞ EC 42920.5(a) Foster Youth Services Coordinating Program
- ☞ Prevention & Intervention CSEC
- ☞ Integrated Mental Health in Schools
- ☞ Shifting Climate of Probation Toward Prevention

Question 2

The last five years in California's youth serving environment have brought many opportunities and some mandates to work more collaboratively or even more integratively. What is or are the drivers/catalysts to your shared work? In other words, in what areas have you found yourselves most integrated? (2-3 Minutes)

Integrated in System of Care

Types of Services and Funding Strategies



~Integrated Teams / Co-located~

Crisis Resolution Center
Foster Youth (FYSCP)
Suicide Prevention and Intervention
CSEC Prevention and Intervention
Native & Latino Services Teams
Mental Health Prevention in Schools
Custody Based Services
Foster Youth Services
Homeless Student Services
Transition Partnership Plus
Community Resource Web Directory

~Braded Funding Sources~

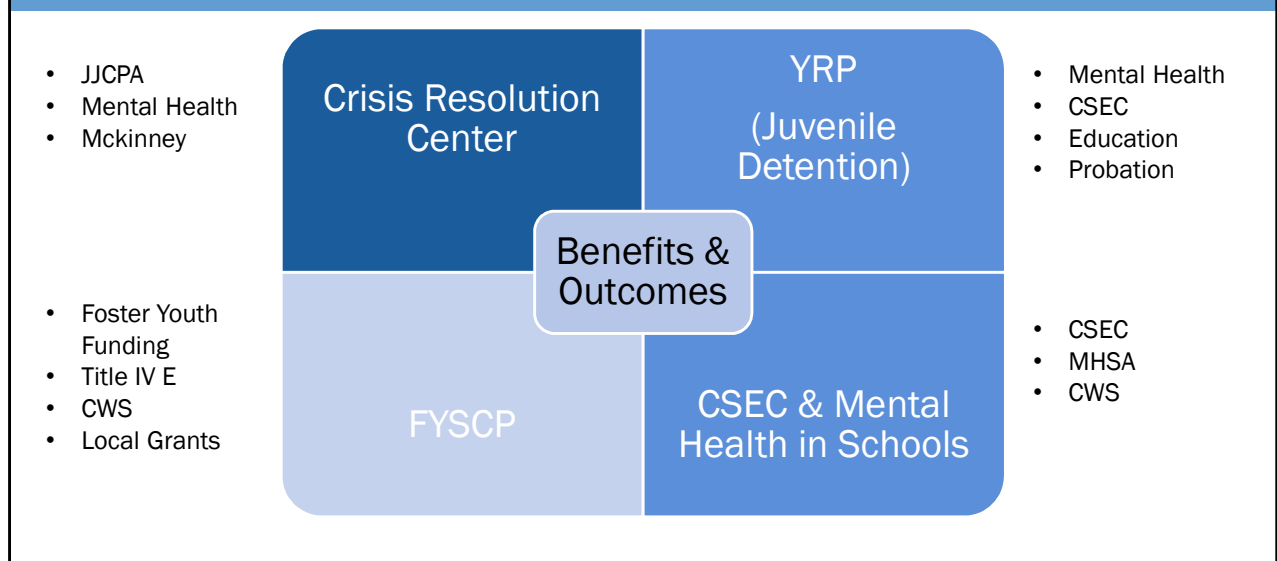
Education
Child Welfare
Probation
Mental Health
MHSA
LCAP
Grant Funding
First Five
Education Core Funding



Question 3


There are differences between organizations that work collaboratively and those which work in a more concretely integrated manner. Can you discuss briefly how your county partners have intended or sought to move from traditional collaborative or cooperative relations to an actual sustained integrated entity? You might address challenges you've overcome or continue to deal with, also include any opportunities that have emerged out of this effort. (2-3 Minutes)

Benefits & Outcomes System of Care 4 examples



Question 4


What outcomes or benefits have you experienced, measurable of otherwise, either as an agency or as a collaborative, due to your highly integrated processes? (2 minutes)



- **Funding**
 - Integrated and Braided Funding
 - Seek new Collaborative Responses
 - High Leverage Grants
- **Communication**
 - Ensure MOU reflects current needs
 - Integrated Teams
 - Integrated Information Systems
 - Information Sharing
- **Succession Planning**
 - Hiring staff with shared values
 - Partnership Planning
 - Mentoring current staff to fill roles

Thinking About the Future

Use continuous improvement strategies to respond and adapt 30 years of MOU



Question 5

As you think about the future of youth services in your community, what is your interagency leadership team doing to assure that the higher levels of sharing and deeper alignment of your organizations are sustained going forward? (3 minutes)

- a. Is there a document which captures or anchors your integrated leadership processes?
- b. Thoughts or actions you're looking at in the future to assure that the higher levels of sharing and deeper alignment occurs?

Placer County Children System of Care

Moderator:

Rick Saletta

Panelists:

Colleen Nichols – Superior Court Judge

Twylla Abrahamson – Director, Children System of Care

Michael Lombardo – Executive Director, Placer County Office of Education