

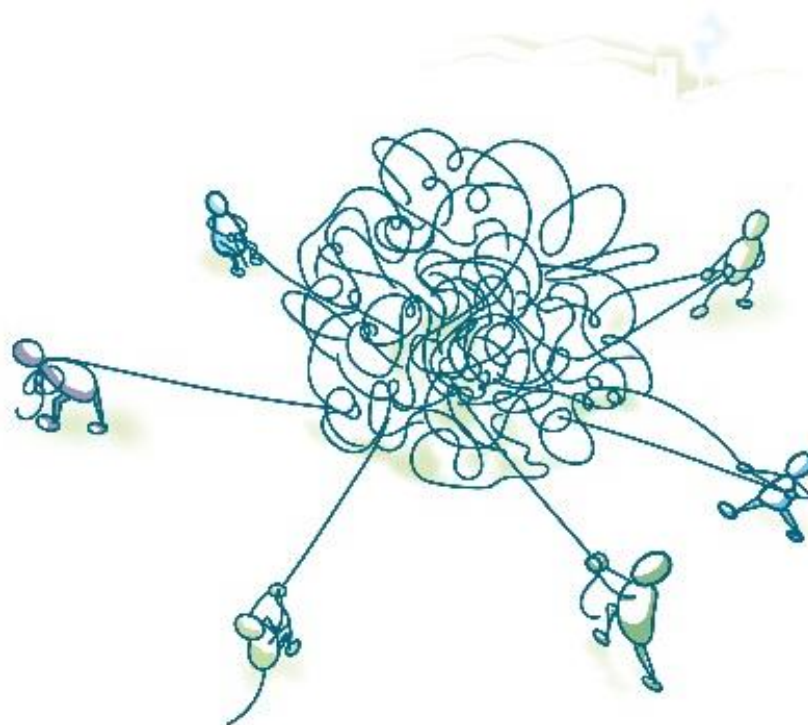
BUILDING ACCOUNTABLE COMMUNITIES: HEALTH & PREVENTION

Breaking Barriers

November 21, 2019

Jeremy Cantor
JSI Research & Training Institute

@jeremy_cantor







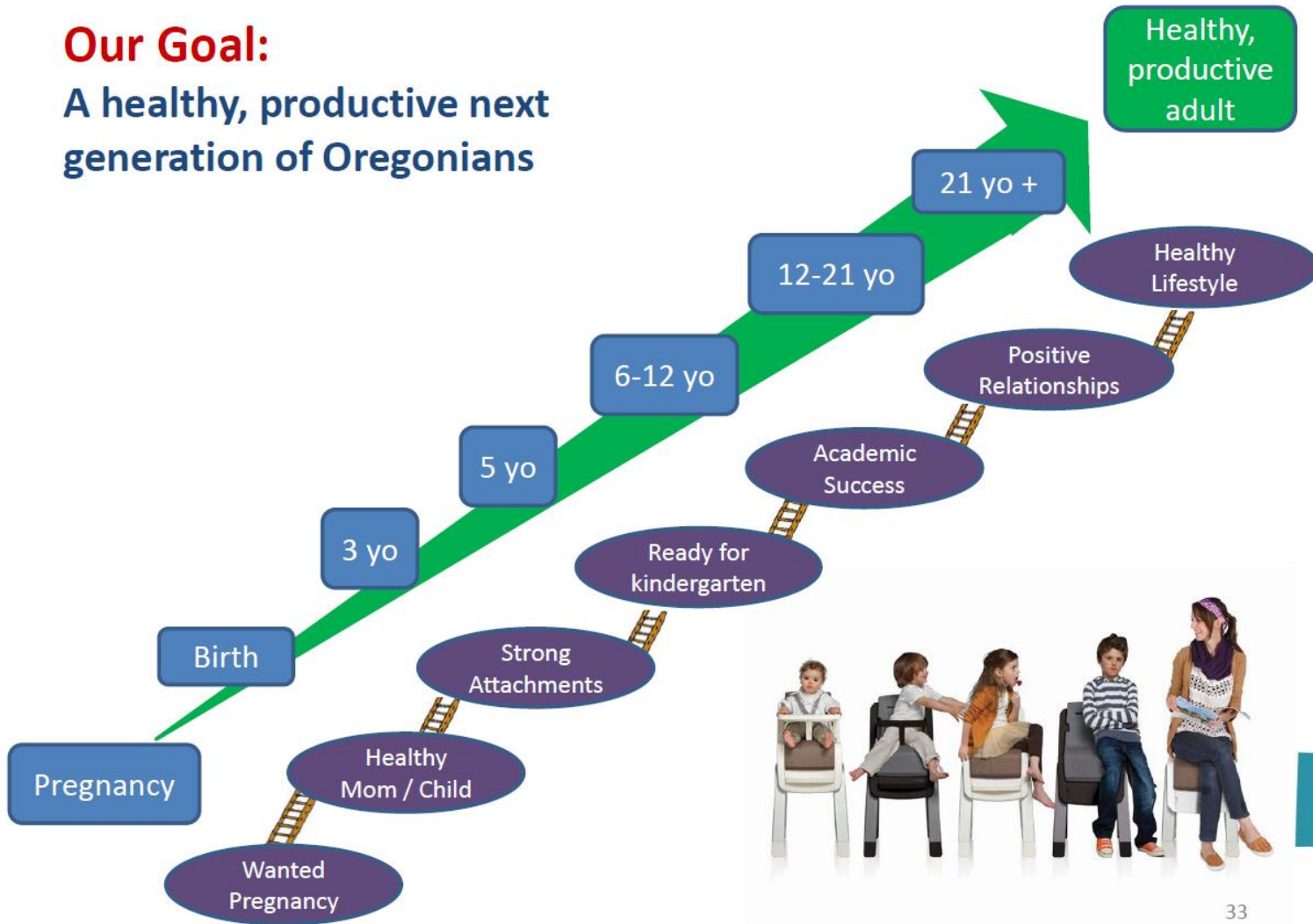
What We Are Most Trying to Prevent:

- Future generations of “high utilizers”
- Cascading adverse life events that derail a healthy life



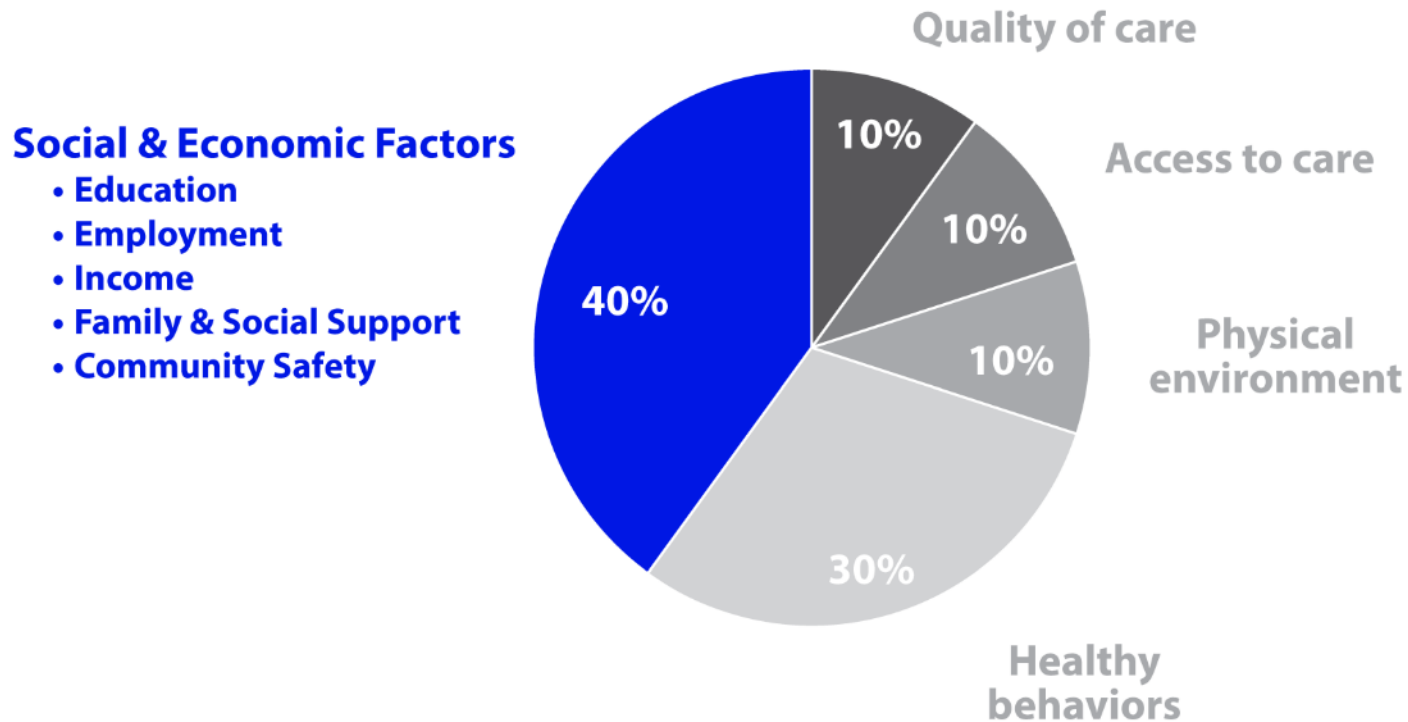
Our Goal:

A healthy, productive next generation of Oregonians

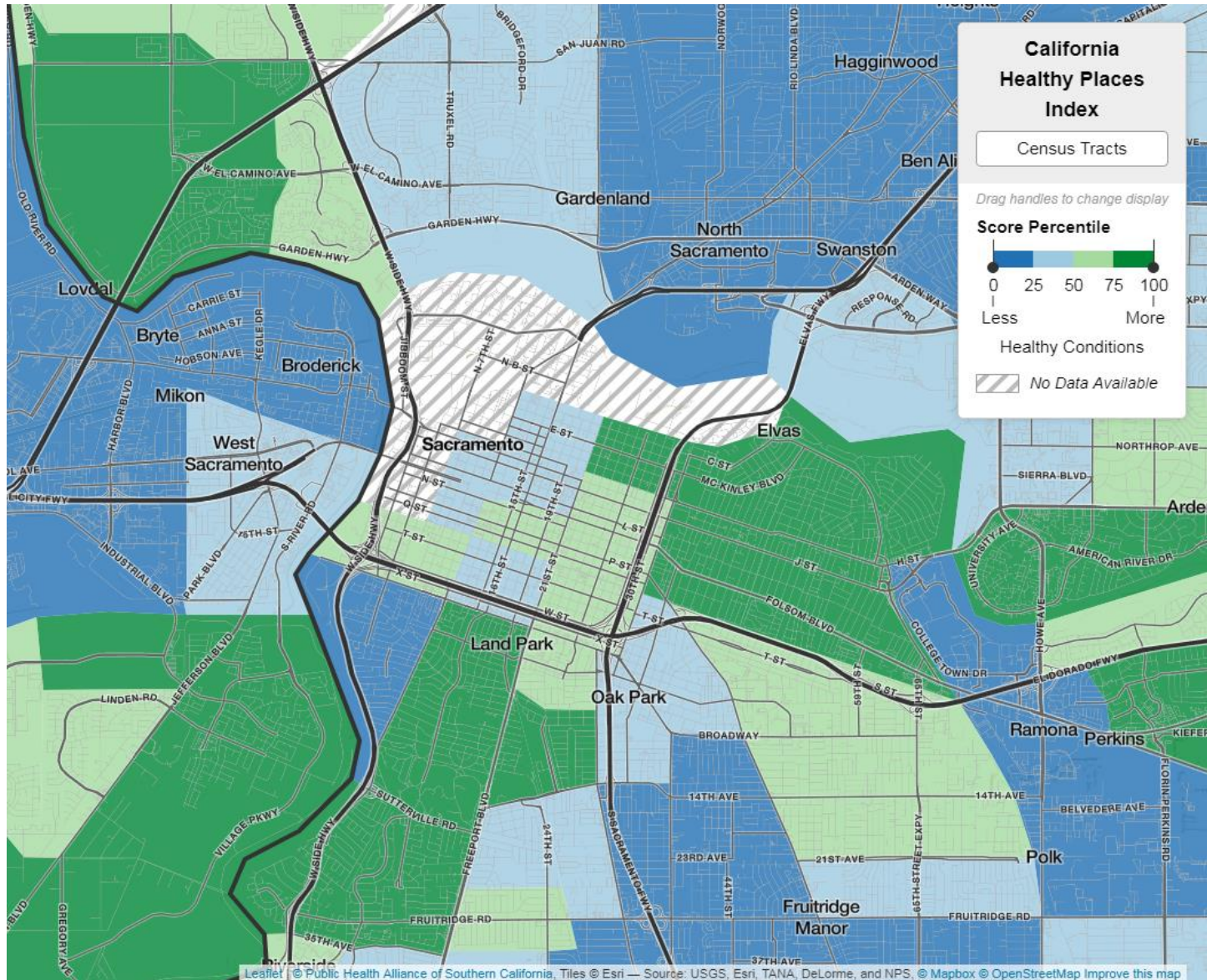


The Social Determinants of Health

To address health inequalities, you must address social and economic inequities.



Data from "County Health Rankings & Roadmaps," University of Wisconsin Population Health Institute.

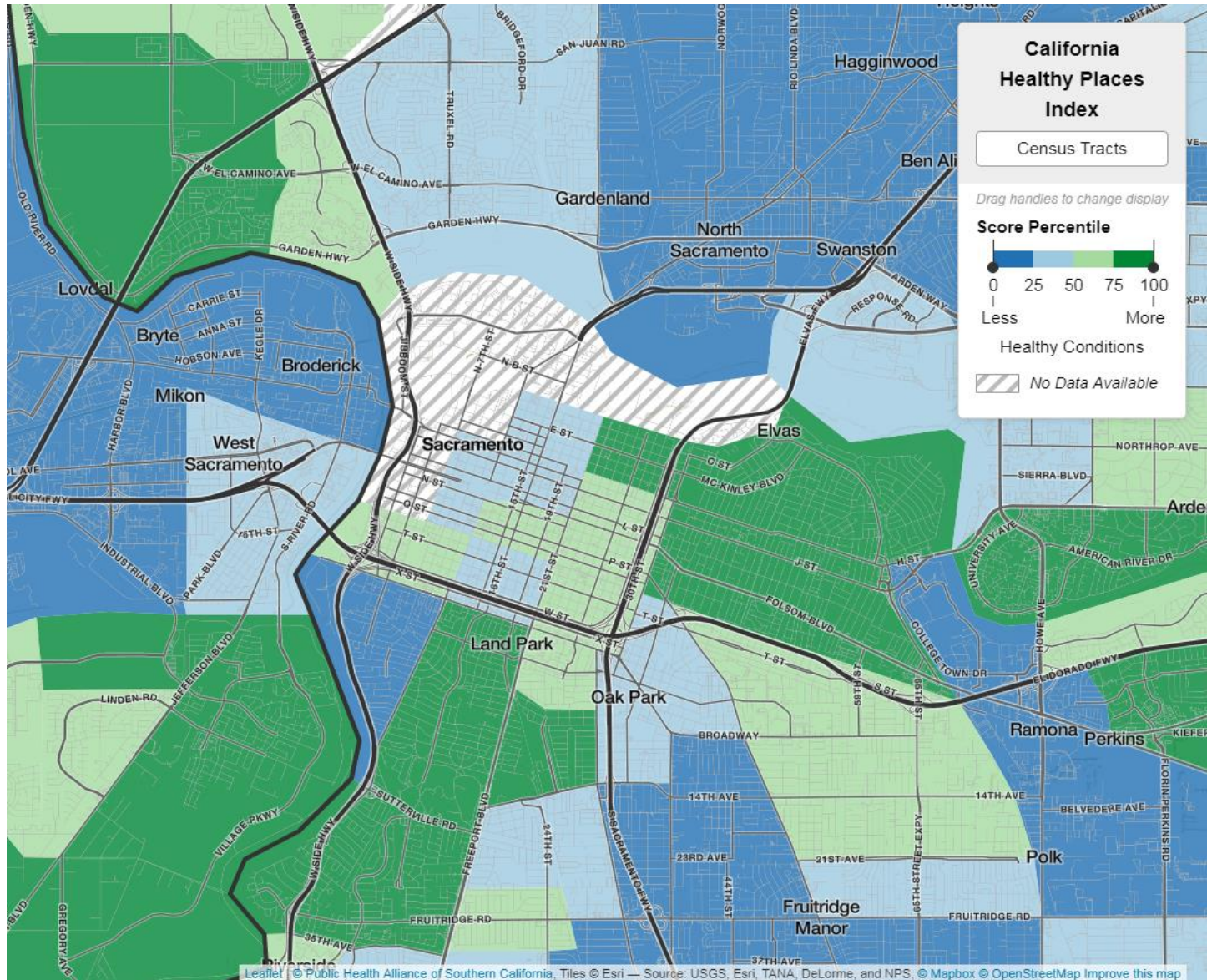


Leaflet | © Public Health Alliance of Southern California, Tiles © Esri — Source: USGS, Esri, TANA, DeLorme, and NPS, © Mapbox © OpenStreetMap Improve this map

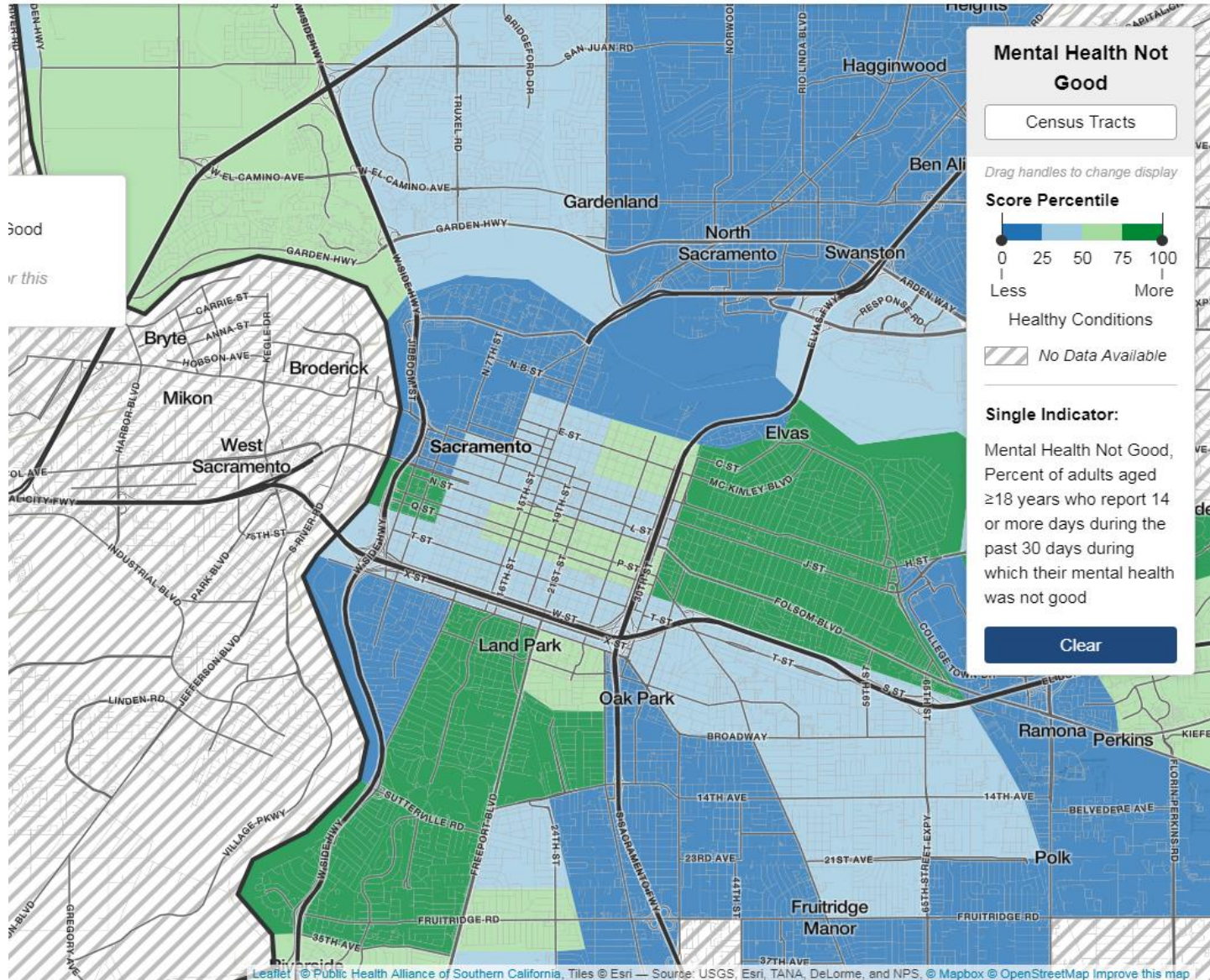
Did you know your zip code is a better predictor of your life expectancy than your genetic code?

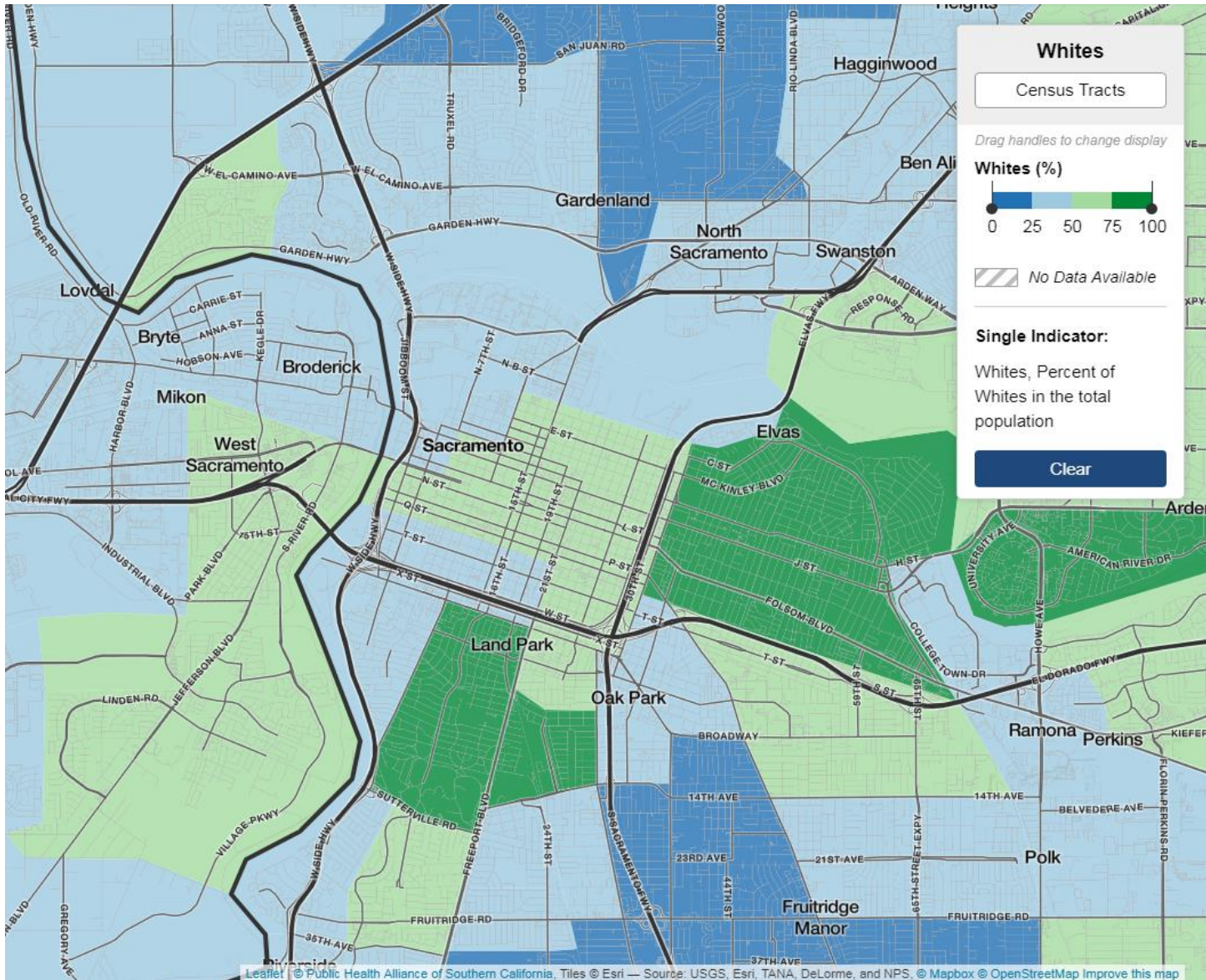
ZIP CODE	Life Expectancy
95219	73
92657	88

health happens here



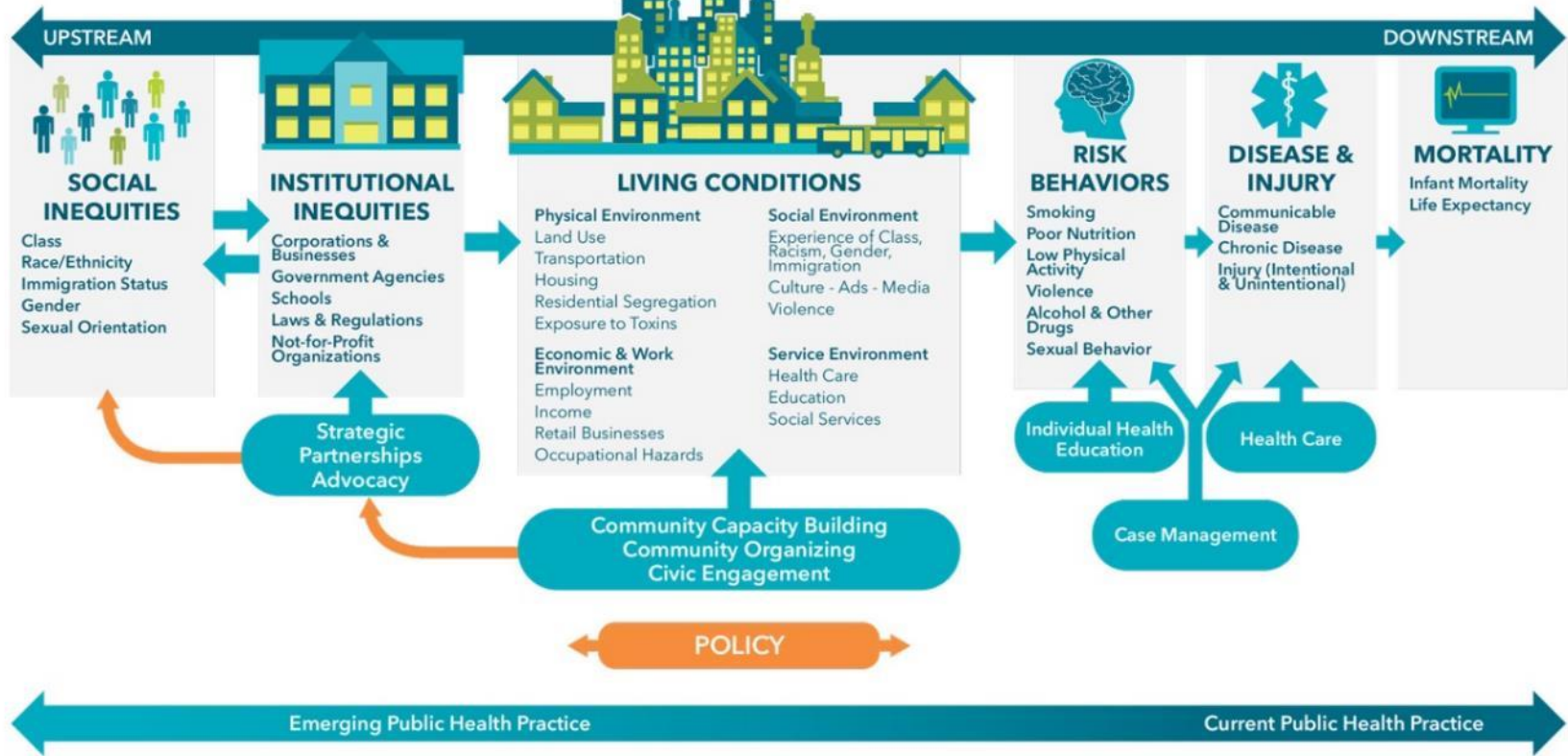
Leaflet | © Public Health Alliance of Southern California, Tiles © Esri — Source: USGS, Esri, TANA, DeLorme, and NPS, © Mapbox © OpenStreetMap Improve this map





Leaflet | © Public Health Alliance of Southern California, Tiles © Esri — Source: USGS, Esri, TANA, DeLorme, and NPS, © Mapbox © OpenStreetMap Improve this map

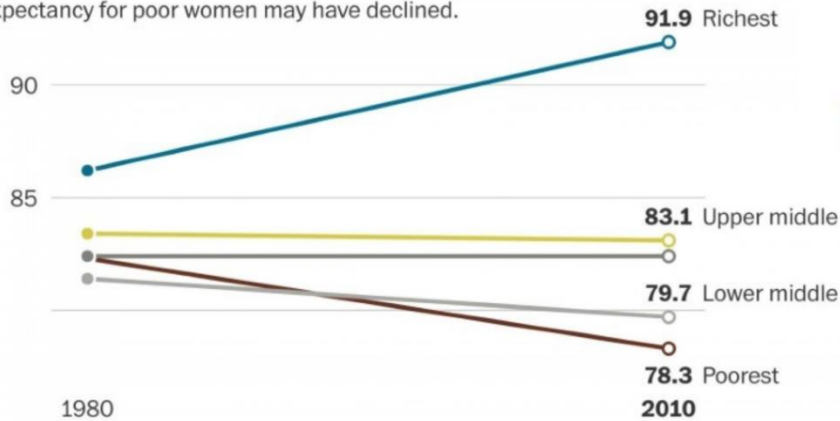
A PUBLIC HEALTH FRAMEWORK FOR REDUCING HEALTH INEQUITIES
BAY AREA REGIONAL HEALTH INEQUITIES INITIATIVE



Place, race, SES, social factors, stress...

Inequality in life expectancy widens for women

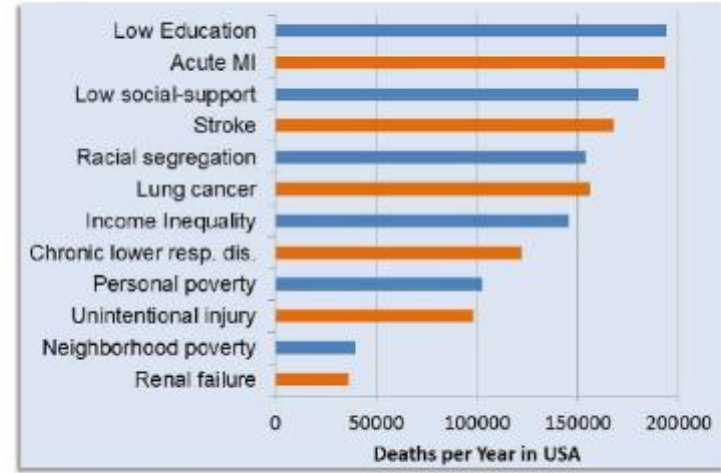
Wealthier women can expect to live longer than their parents did, while life expectancy for poor women may have declined.



Life expectancy for 50-year-olds in a given year, by quintile of income over the previous 10 years

Source: National Academies of Science, Engineering and Medicine

Deaths Attributable to Social Factors Compared to "Causes" of Death

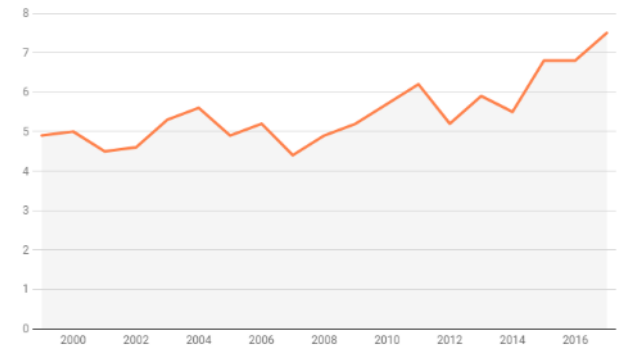


Mailman School of Public Health
Department of Epidemiology
Social Epidemiology Cluster

Data from:
Galea, S. et al. *Am J Public Health* 2011; 101: 1456-1465
Minino, A. et al. *Natl Vital Stat Rep.* 2002; 50: 1-120.

Rising Suicide Rates Among California Youth

About 7.5 of every 100,000 young people ages 13 to 21 in California died by suicide in 2017, up from a rate of 4.9 per 100,000 in 2008.



Credit: Phillip Reese for California Healthline
Source: U.S. Centers for Disease Control and Prevention • Get the data • Created with Datawrapper

The Underlying Issue

There is broad agreement at a high level on goals for health system transformation:

- 1) better health
- 2) better services
- 3) reduced costs
- 4) happier staff and stakeholders
- 5) increased equity

There is also broad agreement that no one is truly **accountable** for progress on those goals.

Untying the Knot

A Vision for
Improved Health and
Health Equity in California

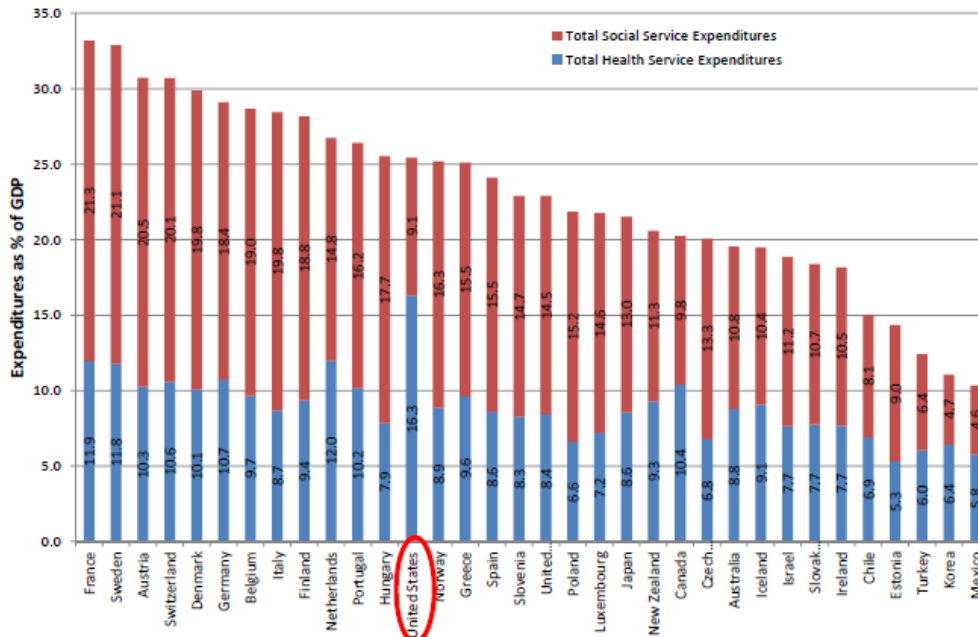


Made possible with support from
Blue Shield of California Foundation





Resources & Incentives



In OECD, for every \$1 spent on health care, about \$2 is spent on social services
In the US, for \$1 spent on health care, about 55 cents is spent on social services



84% in housing instability: development/expansion of supportive housing and recuperative care capacity



79% in transportation: non-emergency medical and non-medical transportation



74% in food insecurity: grants to establish partnerships with local organizations

Focus Area of Recent Investments



Wrong Pockets Problem



About Patient Care Research Education

Home > UCSF News Center > California's Tobacco Control Program Generates Huge Health Care Savings

California's Tobacco Control Program Generates Huge Health Care Savings

"Over a span of nearly 20 years, California's tobacco control program cost \$2.4 billion and reduced health care costs by \$13.4 billion, according to a new study by UC San Francisco (UCSF)."





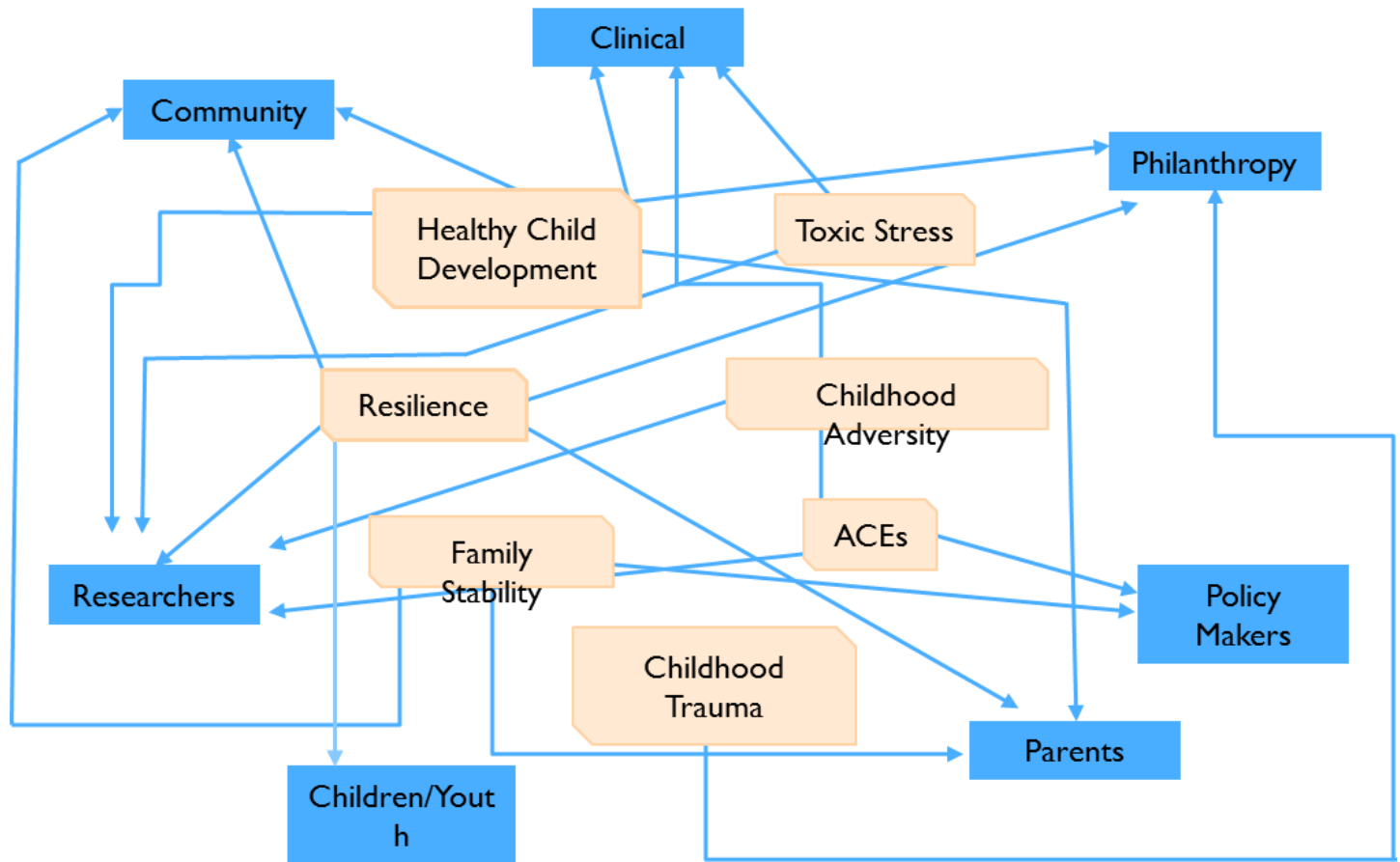
Complexity





Complexity

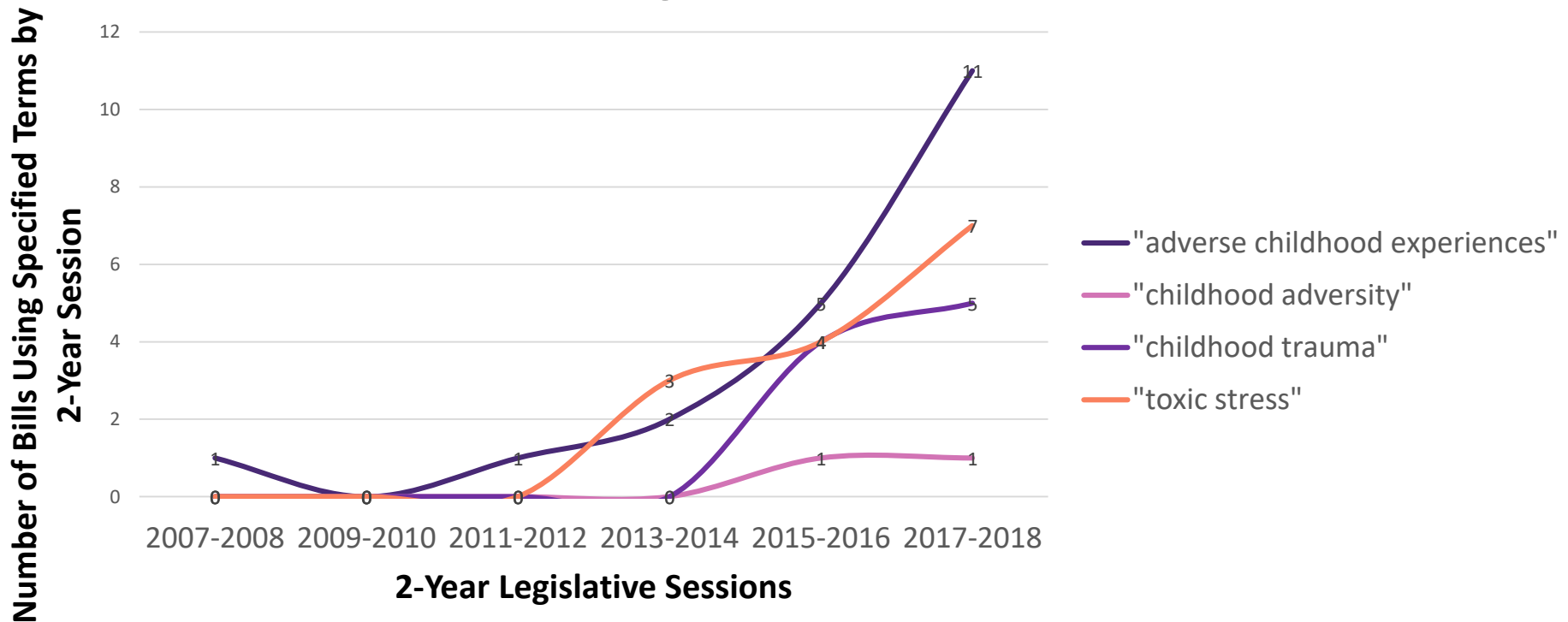
Key Terms Map: Audience





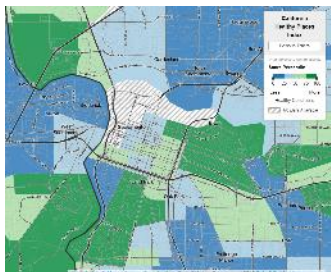
Complexity

Use of *Adverse Childhood Experiences, Childhood Adversity, Childhood Trauma, and Toxic Stress* in Introduced Legislation in the California State Legislature, 2007 - 2018





Build a different regional/local infrastructure



“I think we have to look holistically at health... [health plans] realize that although we would want to provide every single service and provide every possible avenue for our members to have better health, we have to partner with our communities.”
-Managed Care Plan leader

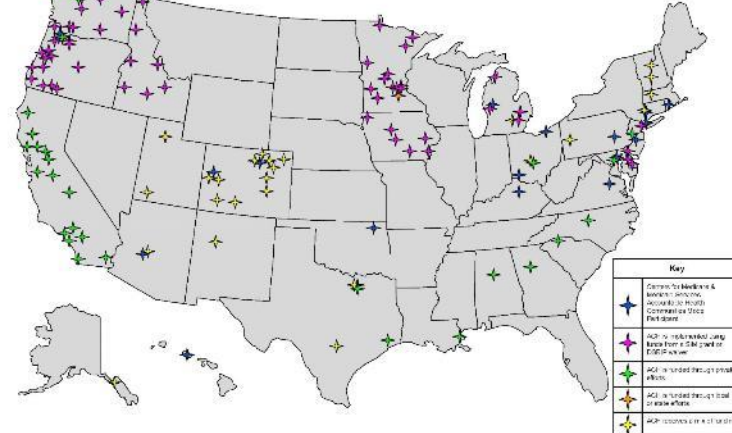
- A neutral, trusted convener
- Accountable to all stakeholders
- Focused on efficiency and coordination
- Able to pool and align \$
- Centered on equity



- ### ACH COMMUNITIES
- › Fresno County
 - › Humboldt County
 - › Imperial County
 - › Lake County
 - › Los Angeles County
 - › Boyle Heights
 - › Long Beach
 - › San Gabriel Valley
 - › Merced County
 - › Sacramento County
 - › San Diego County
 - › San Joaquin County
 - › Santa Clara County
 - › Sonoma County



Accountable Communities for Health Across the United States



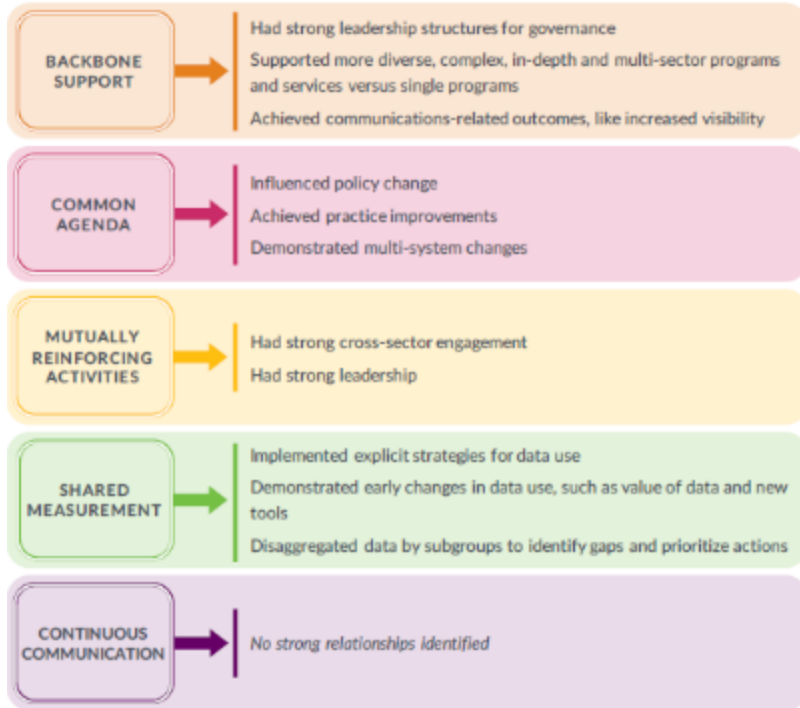
SIERRA HEALTH FOUNDATION



Creating Alignment



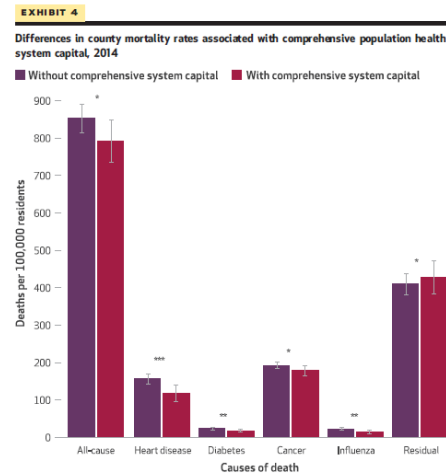
Evidence is Growing



Collective impact “undoubtedly contributed” to population change in 8 study sites, including impacts on things like teen birth rates & youth justice involvement. More mature implementation had better outcomes.

<https://www.orsimpact.com/blog/When-Collective-Impact-Has-Impact-A-Cross-Site-Study-of-25-Collective-Impact-Initiatives.htm>

Glen Mays & coauthors examined National Longitudinal data from 1998-2014 and found that communities with strong multisector partnerships had lower mortality rates.



“Deaths due to cardiovascular disease, diabetes, and influenza decline significantly over time among communities that expand multisector networks supporting population health activities.”

Evidence is Growing

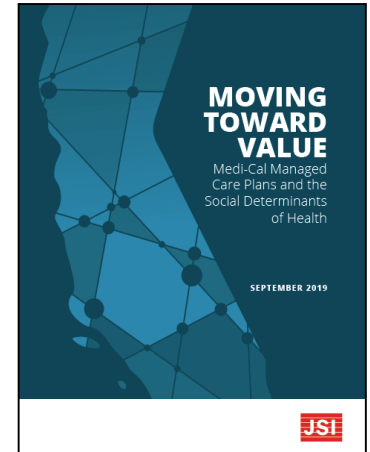
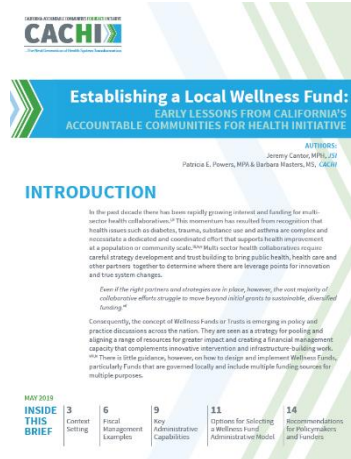
Imperial County	Imperial's ACH employed a system-wide approach to fundamentally change how asthma is treated in their county. The ACH's Asthma Community Linkages Project connects asthma patients in the ED to appropriate follow-up care.
Sonoma Case Study	Hearts of Sonoma County implemented a robust portfolio of interventions to better control blood pressure (BP). Providers reported an increase of nearly 20% in the percent of people with controlled BP—a HEDIS measure—within 3 years.
New York	Staten Island PPS integrated data from a variety of sources to drive interventions for SUD, resulting in reduction of opioid overdoses by 45%.
Other Ventures Projects	RE-Think Health's Ventures Project evaluation found that the six Ventures sites (which included the Sonoma case study above, as well as others sites) were building strong local hubs, had more robust partner networks, were better adapted to local context, and influenced local and state policy.



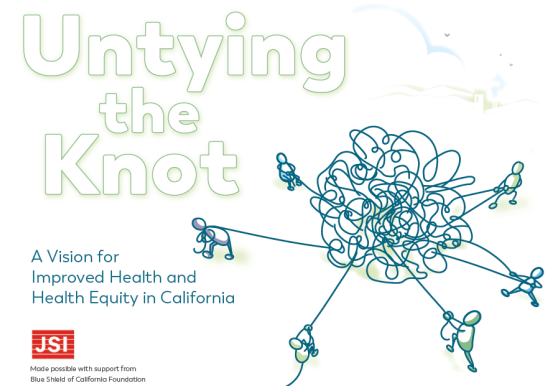
Thank you!

www.jsi.com
jeremy_cantor@jsi.com
[@jeremy_cantor](https://twitter.com/jeremy_cantor)

Join our newsletter:
<http://eepurl.com/cuSV69>



jsi.com/movingtowardvalue



jsi.com/untyingtheknot