



# Breaking Barriers 2020 Fall Webinar Series

---

*THE URGENT NEED TO ACCELERATE DATA  
INTEROPERABILITY ACROSS HEALTH AND HUMAN SERVICES*

OCTOBER 14, 2020

# Sponsors



# Welcome and Introductions

- ***Steve Hornberger***
  - *Director, San Diego State University School of Social Work, Social Policy Institute*
- ***Richard Knecht***
  - *Managing Partner, Integrated Human Services Group, LLC*

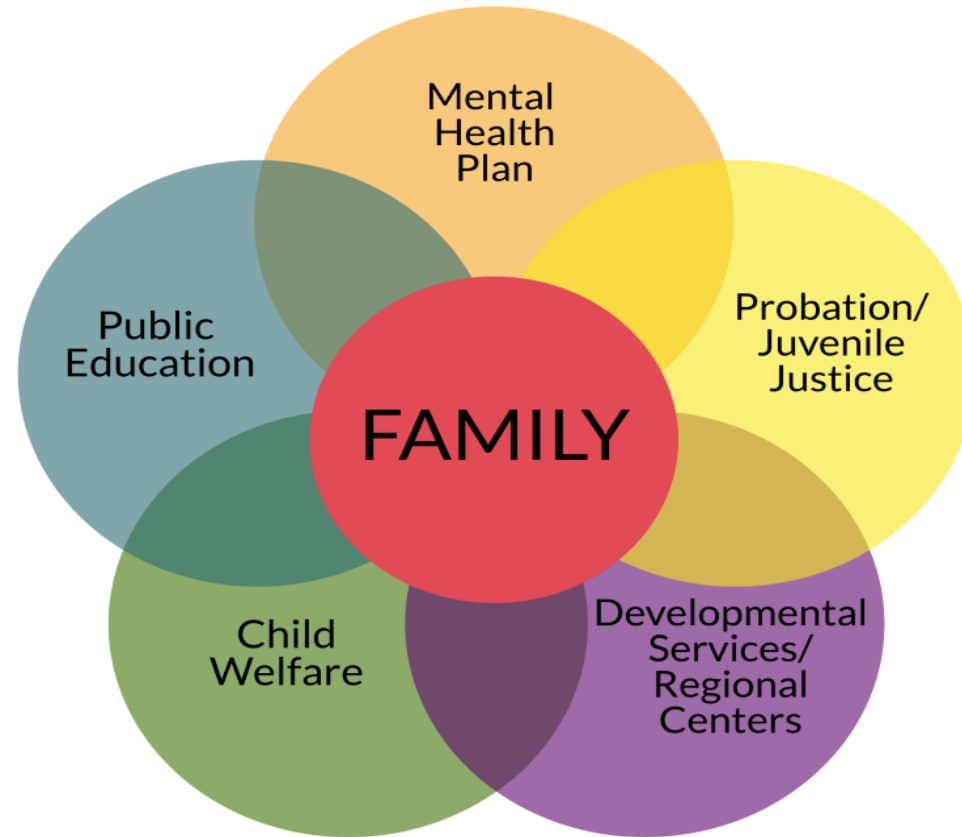
# Today's Purposes...

- **Outline the urgent need to advance Interoperability and Data Integration for youth and family**
- **Introduce the National Action Agenda to Advance Upstream Social Determinants and Health Equity**
- **Overview core interoperability and cross system data sharing concepts; current trends and exemplars**
- **Describe Steward's of Change Institute's new training methodology to build knowledge, skills and competencies for interoperability.**

# Some System Level Context--AB 2083

- *Establishes required department partners, with local options for others:*
  - *Probation*
  - *Mental Health/Behavioral Health*
  - *Child Welfare/Social Services*
  - *Regional Center*
  - *County Office of Education/SELPA*
- *Within required MOU, local systems must identify effective information and data sharing and management framework.*

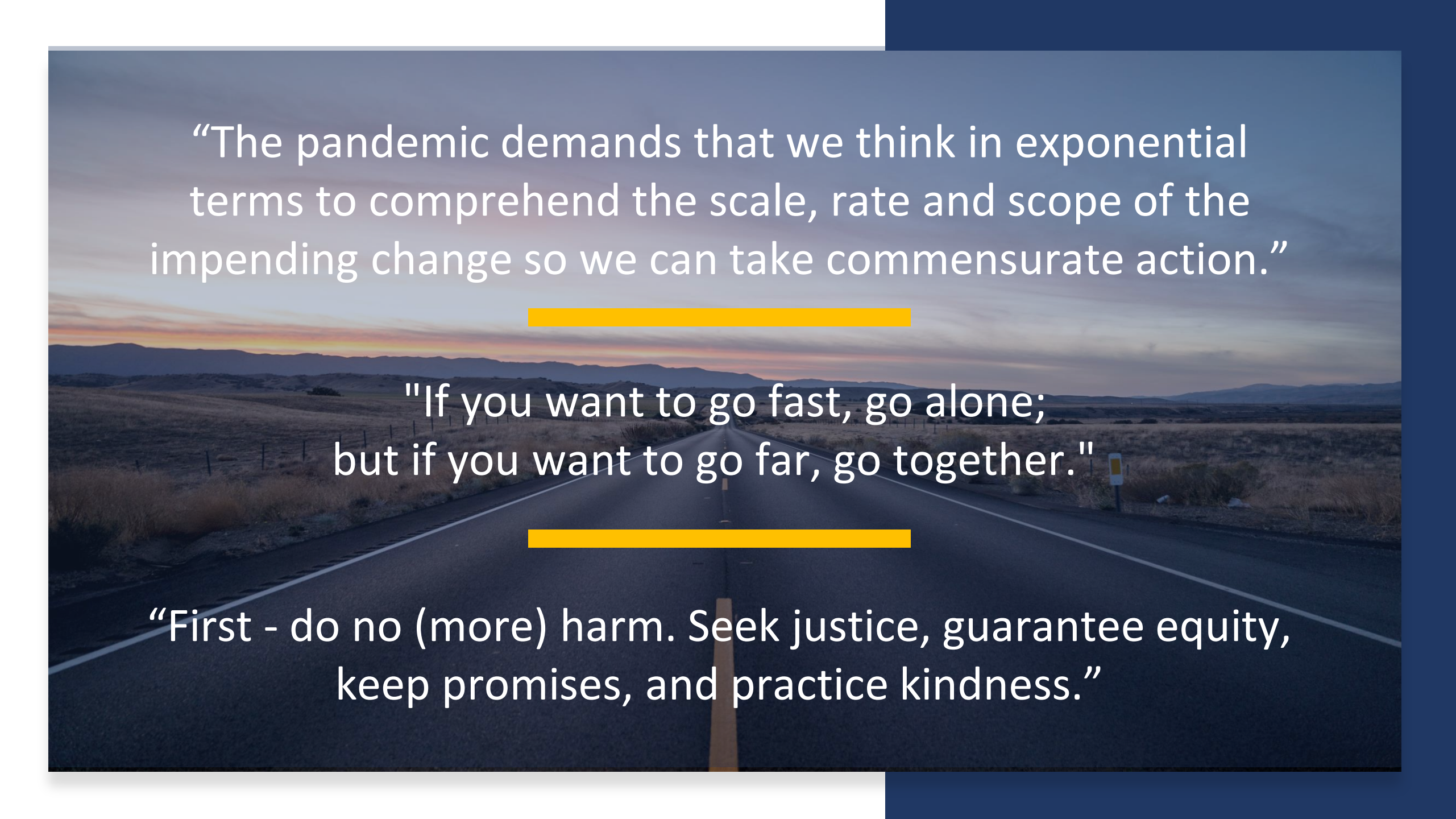
# CA's Children and Youth System of Care



# The National Action Agenda to Advance Upstream Social Determinants and Health Equity

---





“The pandemic demands that we think in exponential terms to comprehend the scale, rate and scope of the impending change so we can take commensurate action.”

---

“If you want to go fast, go alone;  
but if you want to go far, go together.”

---

“First - do no (more) harm. Seek justice, guarantee equity, keep promises, and practice kindness.”



*“I skate to where the puck is going to be, not where it has been.”*

- Wayne Gretzky

---

We are collaboratively creating a National Action Agenda as roadmap to guide development and implementation of system-level, cross-domain, paradigm-changing approaches to advance upstream SDOH factors beginning in 2021.



# What We Plan to Accomplish

---

## Goal:

To improve health, safety, well-being and equity by addressing **root causes of systemic change**, racial justice and socioeconomic disparities especially for under-resourced and under-served populations.

## Method:

Improve **upstream social influences** (aka SDOH) by dramatically improving *responsible information sharing and interoperability* across the multiple domains and myriad entities serving people.

## Deliverable:

Identify and begin implementing a few high-value, achievable, **actionable recommendations** in specific locations and across domains, starting in 2021.



# Process and Plan of Action to Accomplish Goals

## Social Determinants/Influences Workgroups

**SDOH Workgroups:  
100+ Members/Advisors**

**Neighborhood and Physical Environment**  
(Housing, Food, Transportation, Safety, Parks, Walkability, Environmental, Geography)

**Economic Mobility**  
(Employment, Income, Expenses, Debt)

**Education**  
(Early childhood education, home visiting, Literacy, P-20 and vocational education)

**Community and Social Context**  
(Race, Social Integration, Family, Multiple-generation, Supports, Stress, Community Engagement)

**Health Care & Behavioral Health System**  
(Access, Covid, Coverage, Provider Availability, Quality, Equity, workforce)

**Legal Services**  
(Civil Legal, Family Court, Representation)

**(PEW Court Technology Improvement Project)**

# The POC is Modeled on the Integrated Care for Kids Program from CMMI

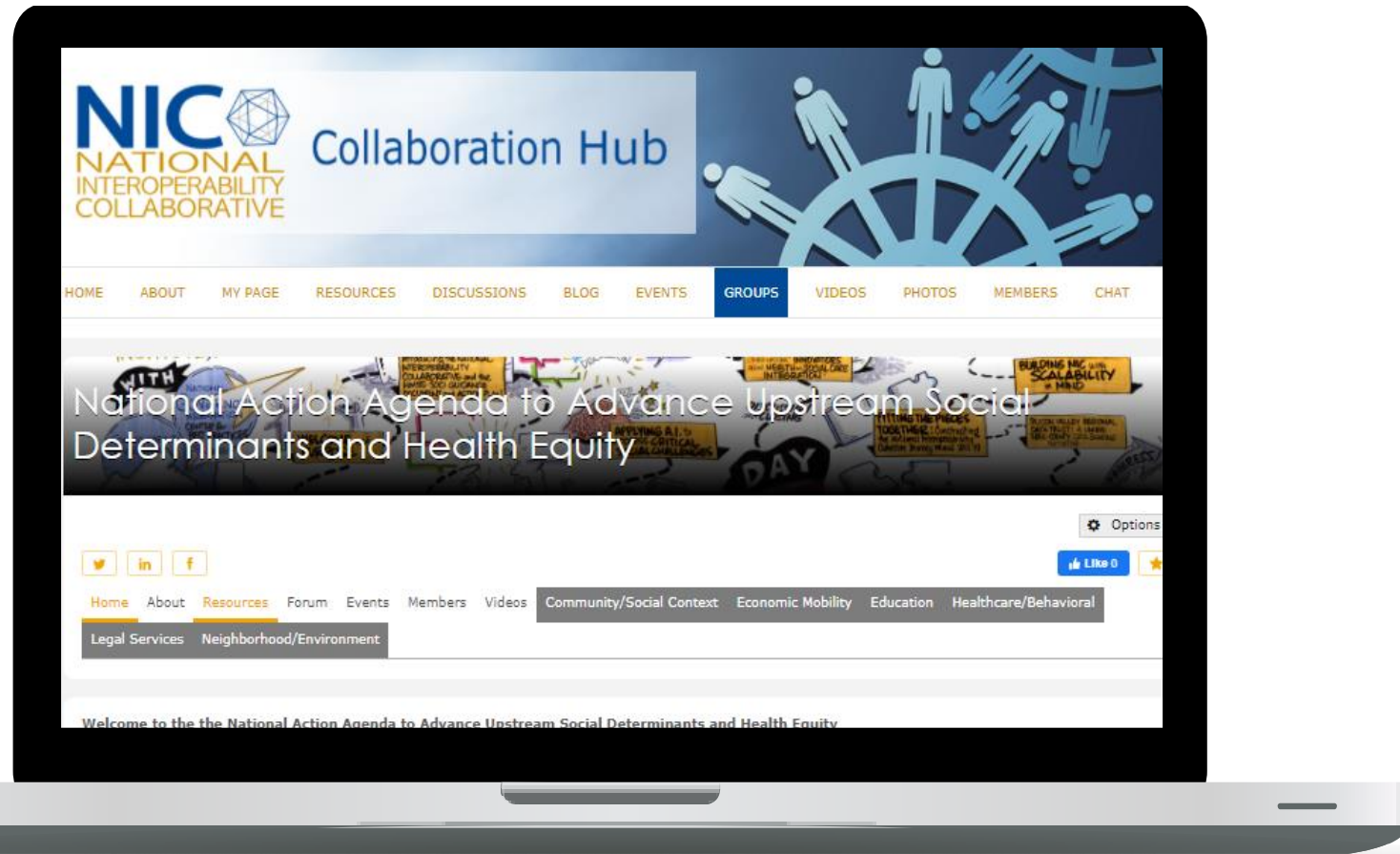
## Programs Include:

- Medicaid/Health
- Behavioral Health
- Children's Services / Child Welfare
- Educations (ECE; K-12)
- Food/Housing Insecurity
- Courts; Criminal Justice





# National Action Agenda Hub Site



<https://hub.nic-us.org/>

# Supporters and Affiliate Sponsors



NIC was Created with generous seed funding from

THE KRESGE FOUNDATION

# Community of Networks

---



# Introduction to Interoperability Overview

---



## 'Interoperability' Defined

We define interoperability as the ability of two or more programs, systems or domains to exchange information and use the information to make better decisions. While the term is often used in a technical engineering sense, we view it in a broader context as including the social, legal, political, organizational and other factors that impact performance.

## 'Upstream' Defined

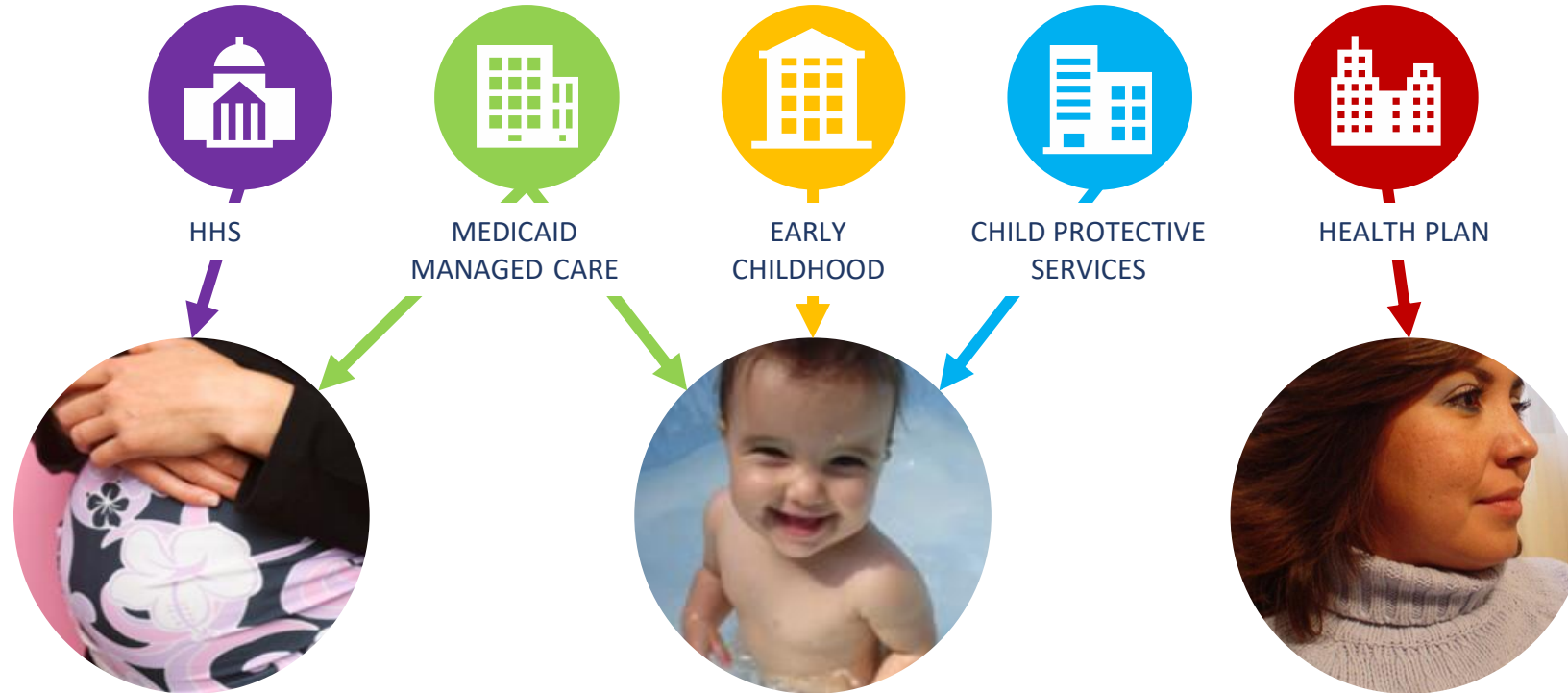
This term refers to programs and processes that focus on prevention, early detection and early intervention. In other words, those elements of the social determinants we're examining that strive to "get ahead" of problems so they either don't occur in the future (ex., a disease is eradicated) or are dealt with at an earlier stage so fewer people are negatively impacted (ex., fewer opioid addictions or Covid-19 cases). The goal of focusing upstream, metaphorically and literally, is to prevent raging forest fires and not just put them out once they occur – which obviously also needs to happen.

# The Garcia Family

---



# Current System



## Needs:

- Health Insurance
- Prenatal Care
- Medical Home
- Medical Referral for substance abuse
- Transportation

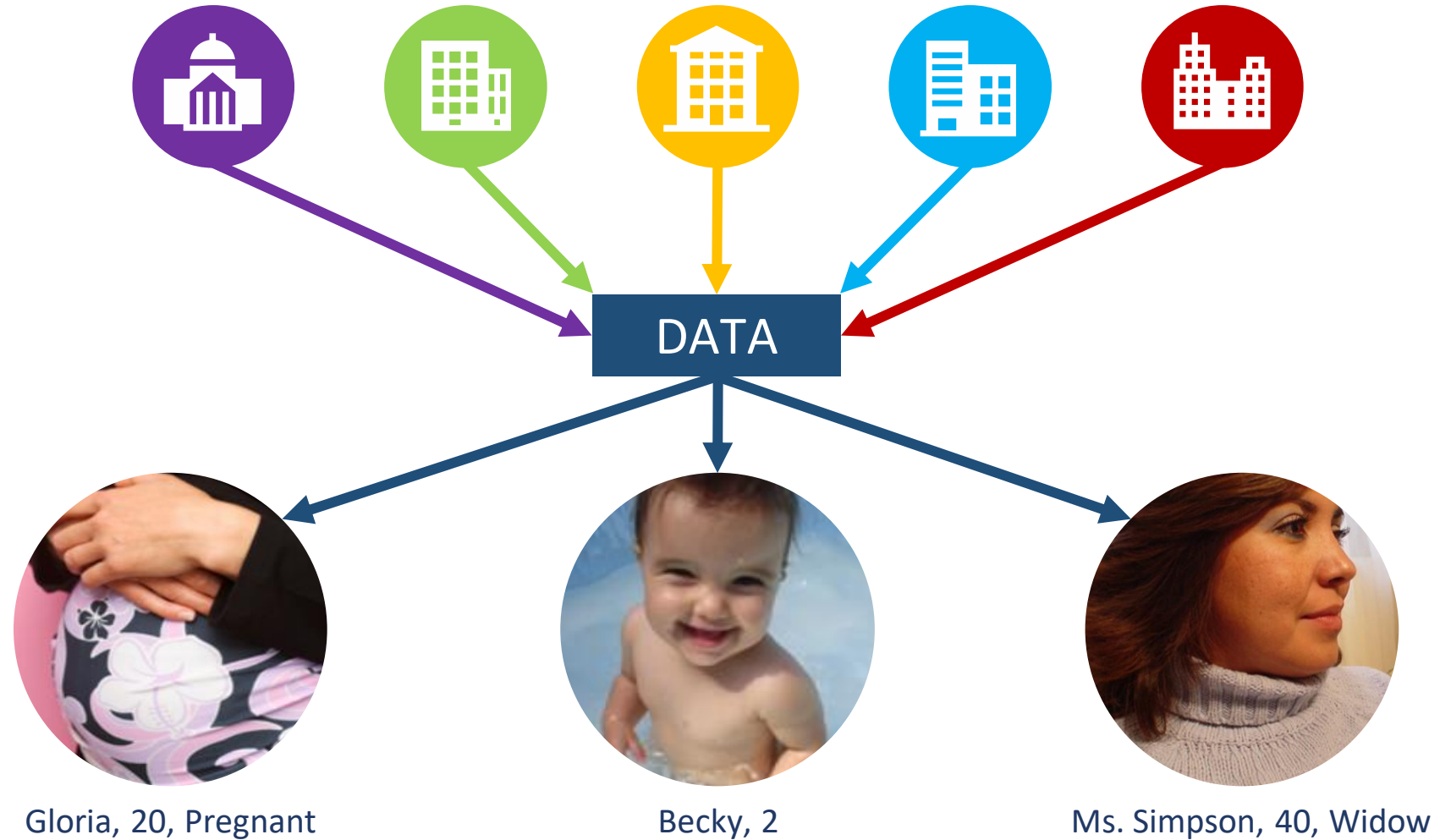
## Needs:

- Immunization Screening
- Lead Screening
- Developmental Screening
- Parenting education
- Well child visits

## Needs:

- Medical referral – Primary care
- Medical referral – Specialty care
- Medical referral – depression and counseling
- Transportation

# Person-centered Care Coordination Through Interoperability



# SOC's Generative Theory of Change

## Policy:

The principles or rules that guide decisions by which human services organizations define how they will achieve desired outcomes across the range of programs, activities and disciplines.

## Structure:

The way public and private human services design, organize and implement work processes to achieve policy and practice goals.

## Practice:

The way public and private human services organizations deliver services and care, monitor and report results, and achieve intended outcomes.



# National Interoperability Initiatives

- [Office of National Coordinator Accelerator Programs](#)
  - Fast Healthcare (FAST)
  - Gravity Project (SIREN)
  - Da Vinci Project
  - Sequoia Project
  - Trusted Exchange Framework and Common Agreement (TEFCA)
- [Integrated Care for Kids \(CMMI\)](#)
- Administration for Children and Families/DHHS
  - [Interoperability Action Plan](#)
  - [California Strategic Interoperability and Integration Plan](#)
  - [Data Standards \(FHIR/NIEM\)](#)
  - [National Human Services Interoperability Architecture \(NHSIA\)](#)

## Foundation/Organizational SDOH Initiatives

- [Data Across Sectors for Health and All In \(RWJF\)](#)
- [Kresge Foundation \(Social and Economic Mobility\)](#)
- [Foresight](#)
- [Well-being in the Nation](#)
- [Levitt Partners](#)

# Interoperability Examples within State and Local Jurisdictions

---

- “Chapter 55” - Massachusetts Interoperability Opioid Response
- Michigan Health Information Network; Interoperability Institute
- LiveWell & ConnectWell San Diego County - DHHS, Health Connect and 211
- Allegheny County, PA – DHHS
- Boulder Colorado, CO – Housing and Human Services
- New Hampshire – DHHS
- Delaware Health and Social Services

# ITCC Overview

- ITCC is a systems-level approach for addressing the challenges of multi-domain information-sharing.
- Provides a common vocabulary, knowledge, skills and tools to build competencies needed to build and sustain interoperability efforts.
- Designed to help people and organizations build, implement and sustain responsible information-sharing to support person-centered, value-based care across the care spectrum.
- Agile module development, supports sustainability through certification program, provides Strategic Action Planning approach.

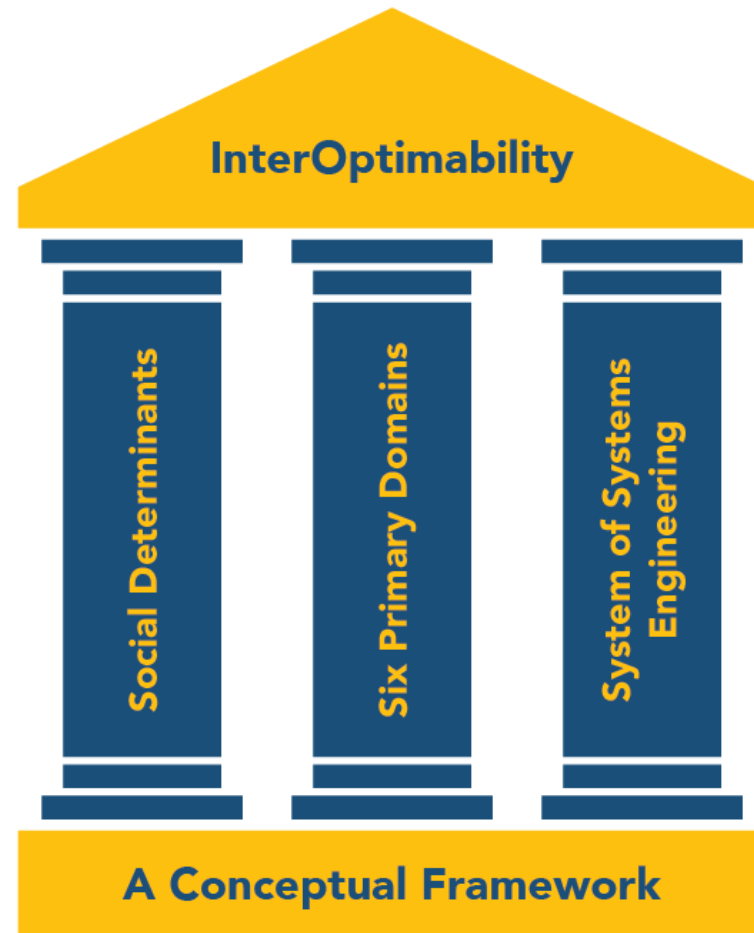


[ITCC Overview and Registration Link](#)

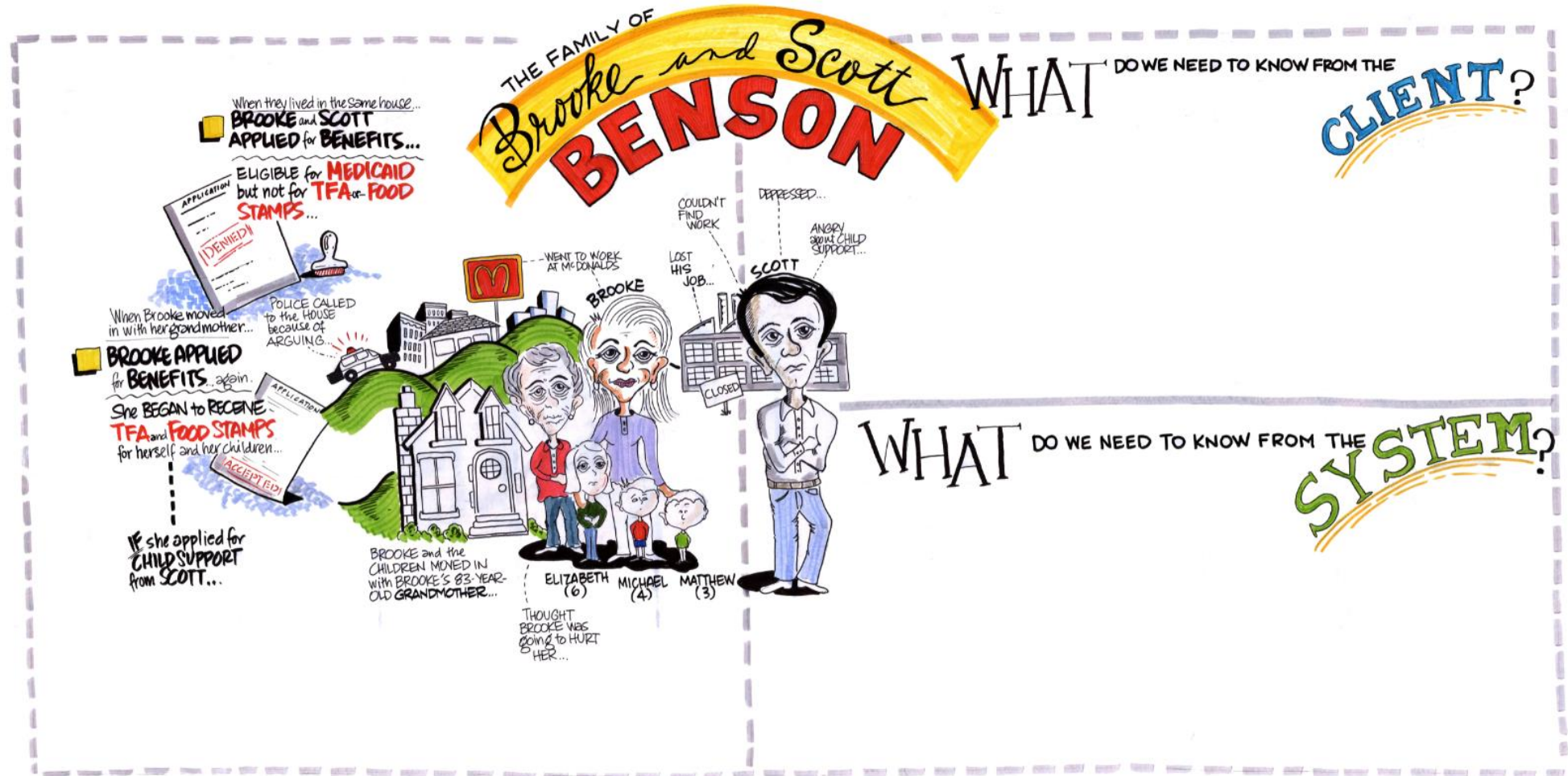


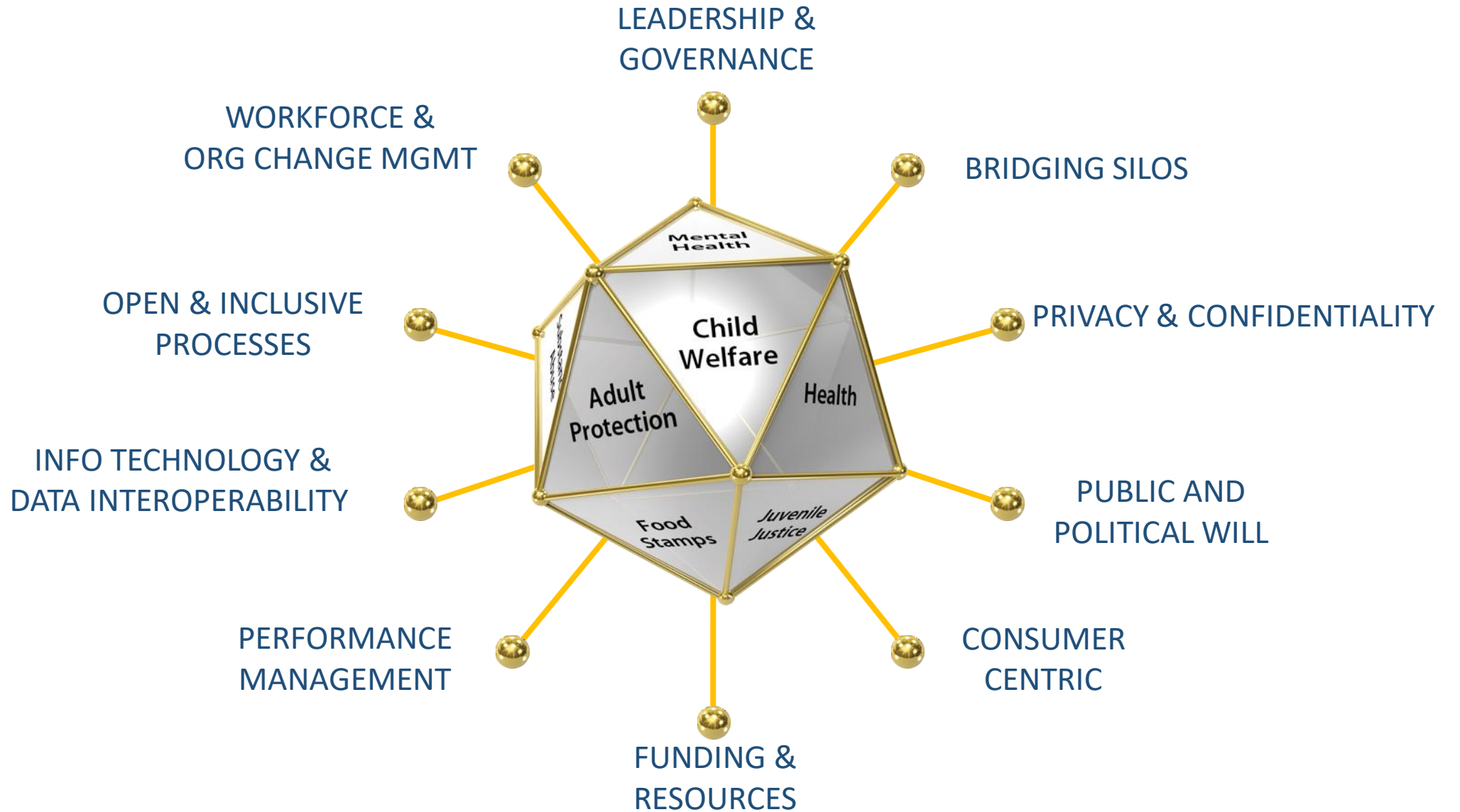
# Fundamental Concepts

---



# Tools, Models and Approaches





# Baseline Assessment - Maturity Matrix

<b>Mastery</b>				
Proficient				
Competent				
Needs Development				
Weakness				
	Not Too Important	Somewhat Important	Very Important	Critically Important

# California Agencies Who Have Piloted ITCC

---

- California Alliance of Children and Families Services
  - Fred Finch
  - Paradise Oaks
  - Plumfield Academy
  - St Anne's
- 
- Stewards of Change is working with CACFS to create a ten-county planning process to support the ACEs Aware Project.

# Questions and Reflections

---

# Resources

---

- Principles for Building Health and Prosperous Communities  
<https://buildhealthyplaces.org/principles-for-building-healthy-and-prosperous-communities/>
- Kresge Ecosystem Readiness Assessment Tool  
[https://kresge.org/sites/default/files/library/human\\_services\\_ecosystem\\_assessment\\_tool.pdf](https://kresge.org/sites/default/files/library/human_services_ecosystem_assessment_tool.pdf)
- The Community Tool Box  
<https://ctb.ku.edu/en>
- California Accountable Communities for Health Initiative (CACHI)  
<https://cachi.org/resources>
- National Academy State Health Policy  
<https://nashp.org/about-nashp/>
- BREAKING BARRIERS TOOLKIT 2019