



Strategies for Building and Leading Impactful Collaboratives

Breaking Barriers, November 12, 2020
Jeremy Cantor, MPH & Erin Shigekawa, MPH
JSI Research & Training Institute

blue of california
foundation

Leveraging Collaboration to End
Domestic Violence



CALIFORNIA ACCOUNTABLE COMMUNITIES FOR HEALTH INITIATIVE

CACHI

...The Next Generation of Health System Transformation

ALIGNING SYSTEMS FOR HEALTH
Health Care + Public Health + Social Services



In the chat:

- Your name
 - Location
 - One word you would use to describe multi-sector collaboratives
- 

Impactful Collaboratives ...



01

Are **dynamic** and **iterative**

02

Have a **clear value proposition**

03

Set an **inclusive agenda**

04

Move at the speed of **trust**



01

Leading a collaborative is
dynamic and iterative



Photo source: <https://www.eater.com/2017/5/12/15630266/dear-white-chefs-stop-talking-start-listening>

Phase 1:
Formation

Phase 2:
Implementation

Phase 3:
Reinvestment

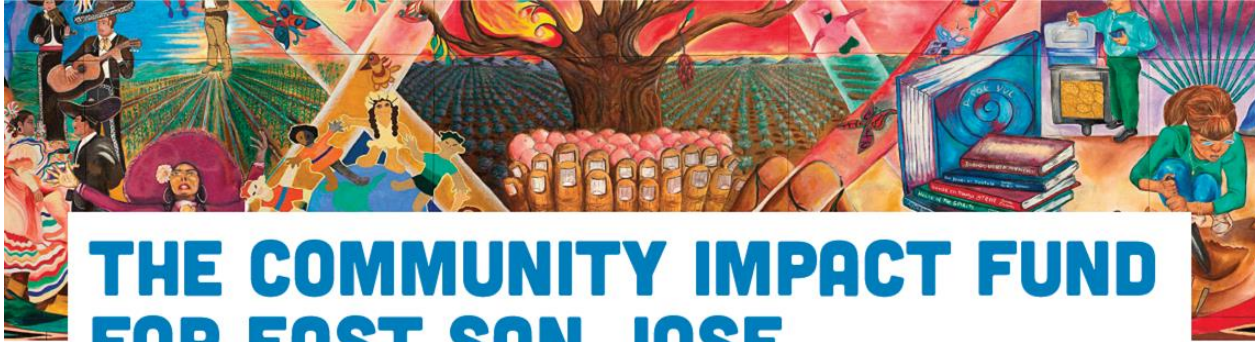
Strategies: Interventions and Infrastructure

Metrics: What Gets Counted Counts

Collaboration: Trust Built on Transparency

Resources: Shared Contribution for Impact

Leadership: Create a Center of Gravity



THE COMMUNITY IMPACT FUND FOR EAST SAN JOSE

LEADING WITH EQUITY FOR A FAIR AND VIBRANT COMMUNITY

The East San Jose PEACE Partnership (ESJPP) is made up of organizations, businesses, community leaders, and government agencies committed to preventing and addressing violence, trauma, and racial inequities. The Partnership has made significant progress through community-driven organizing and strategies, but the COVID-19 pandemic has frayed the health, economic, and social fabric in East San Jose.

Together we can demonstrate an innovative and equitable path from response to recovery to thriving.

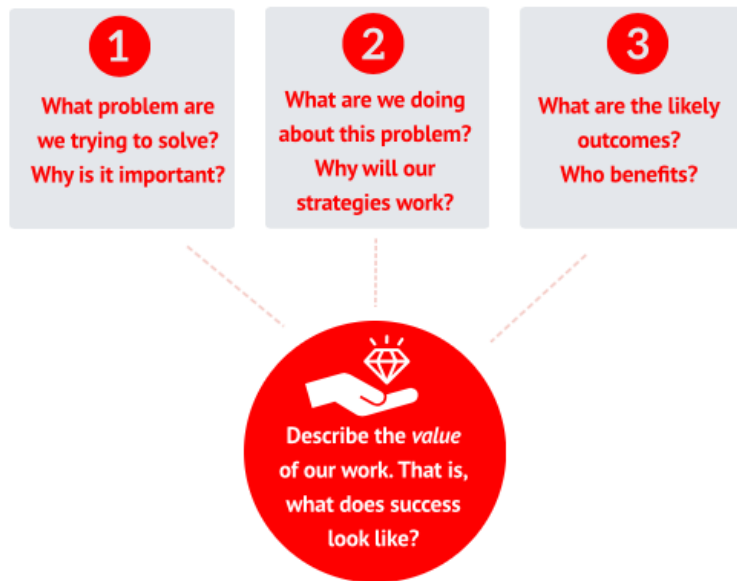


02

Have a clear value
proposition

Value for Collaboratives

The term 'value' can be an abstract concept when applied to a collaborative. Let's unpack what we mean by value.





Describe the Issue: Why is it important?	Define the Solution: What strategies are being employed?	Delineate the Benefits: What are the likely results and to whom will they accrue
This is the most critical issue our community is facing	A list of strategies, mostly services, many of which we're already doing	We'll save a ton of lives and money



Benefits



Community Care Organizations

- New revenue source to hire and supervise Neighborhood Navigators (NNs)
- Training and capacity building for NNs
- Data that proves the importance of NNs
- Linkages to other community-based organizations
- Build the workforce of NNs



Healthcare Organizations

- One contract for a county-wide solution to meet social needs of patients/members
- Coordinated solution across many health and social needs
- NNs hired by CCOs are well trained, accountable and highly trusted within their communities



Community Residents

- One-on-one relationships with trusted NNs
- Personalized assessment of health and social needs
- Connection to specific resources and assistance based on identified needs
- Follow up to assure that needs are met



In the chat:

- Chat in a question or something that resonated with you
- 

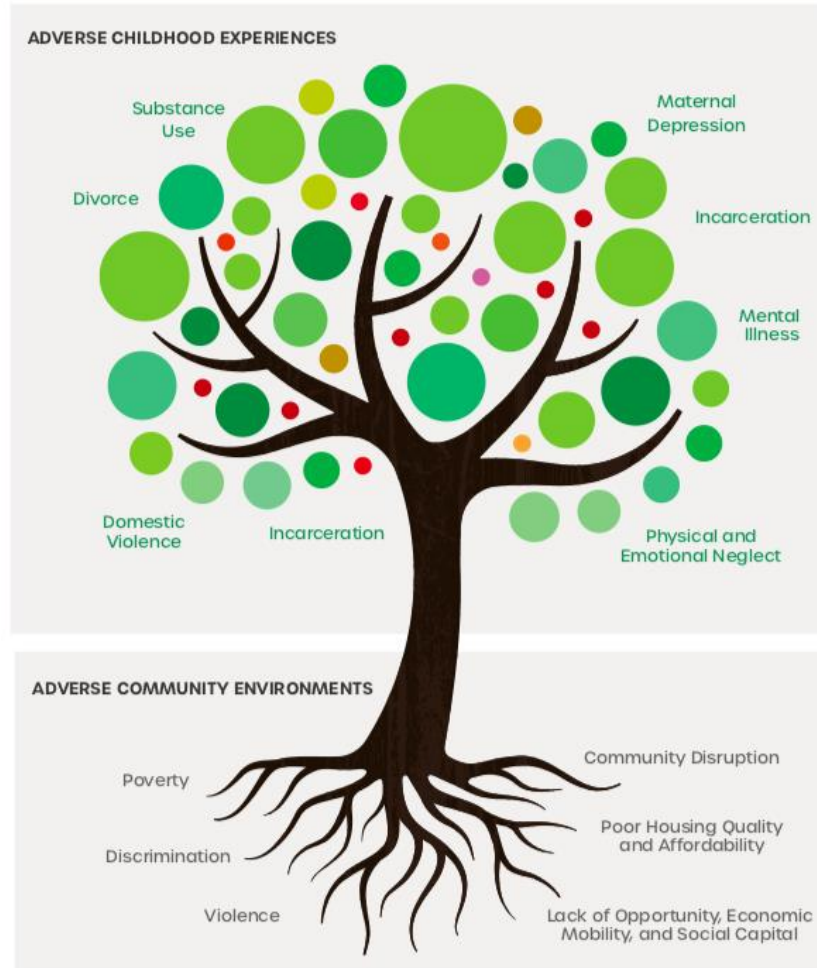


03

Set an inclusive agenda

Develop a shared analysis of root causes

Figure 8 THE PAIR OF ACES



Adapted from : Ellis WR, Dietz WH. A New Framework for Addressing Adverse Childhood and Community Experiences: The Building Community Resilience Model. *Acad Pediatr.* 2017;17(75):586-593. doi:10.1016/j.acap.2016.12.011

CAUSE & EFFECT: The Interconnection of Social Issues and Domestic Violence

One in three women will experience domestic violence (DV) in their lifetime. DV does not occur in isolation; pathways exist to and from a whole spectrum of social issues. Individuals, families and communities experience these issues as deeply entwined and simultaneous, which calls for an integrated approach to addressing DV. The graphic below depicts three pathways from a much broader set of social issues.



Broader structural factors, such as discriminatory policies and cultural norms, shape the expression of these social issues and their relationship with DV. This results in disparities and inequities based on race, ethnicity, geography, socio-economic status, among many others. **It's time for leaders from multiple sectors to look at the whole picture and work together to develop bold response strategies that account for the complexity and scale of the issues.**



Made possible with support from Blue Shield of California Foundation.

Source: [JSI, Cause & Effect](#)

Language and framing are key



SEPTEMBER 2020



WITH SUPPORT FROM
GENENTECH CORPORATE GIVING

Source: [JSI.com/focusingthelens](https://www.jsi.com/focusingthelens)

Adverse Childhood Experiences (ACEs)	Community Trauma	Historical and Structural Racism	Scarcity
Allostatic Load	Complex Trauma	Intergenerational Trauma	Secondary Trauma
Buffering	Cumulative ACEs	Neuroplasticity	Social Cohesion
Childhood Trauma	Cumulative Stress	Nurturing Relationships	Social & Emotional Wellbeing
Childhood Adversity	Epigenetics	Post-Traumatic Stress Disorder (PTSD)	Toxic Stress
Chronic Stress	Family Stability	Protective Factors	Trauma-Informed Practice
Collective Impact	Flourishing	Resilience	Two-Generation Approach
Community ACEs	Healthy Child Development	Restorative Justice	Weathering

FINDING 1:

Understanding audiences is extremely important in order for language to increase inclusion and participation.

FINDING 2:

Aligning language with desired strategies leads to greater impact.

FINDING 3:

No single term or concept is sufficient to capture complexity and subtlety.



I'm Sick of Asking Children to Be Resilient

It's time for reparations and resources and to not expect kids to
"rise above."

By **Mona Hanna-Attisha**

Dr. Hanna-Attisha is a pediatrician and professor at Michigan State University College of Human Medicine.

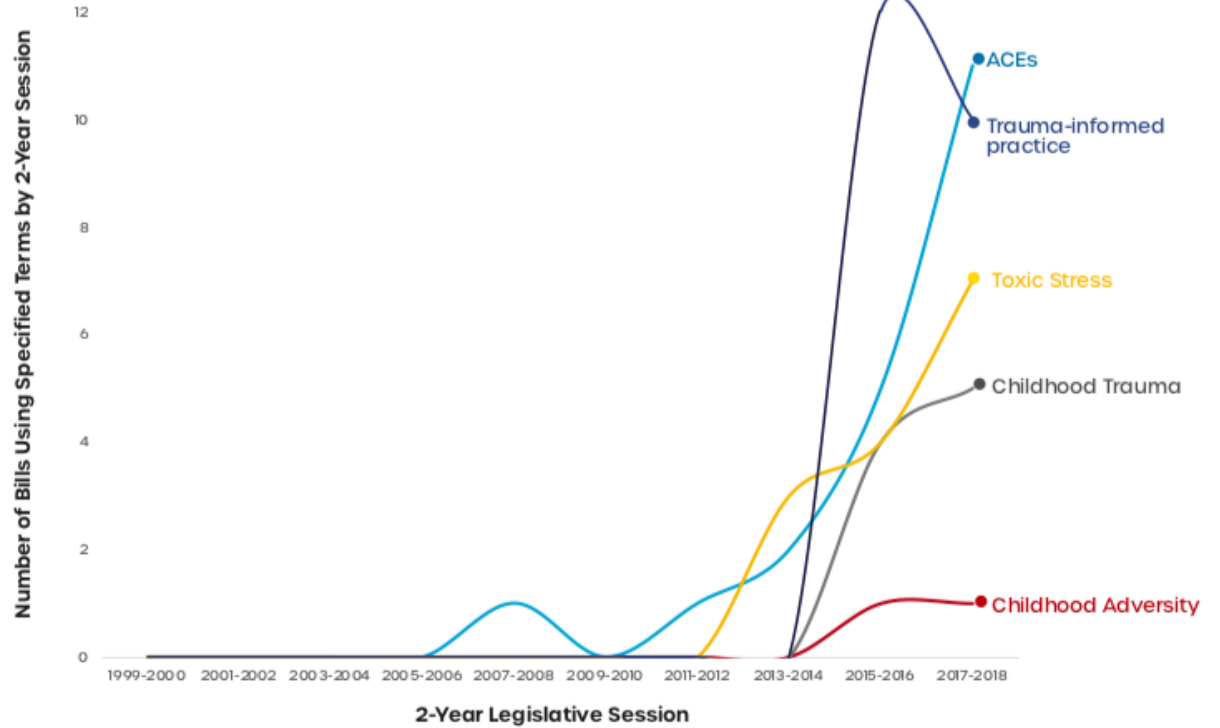
May 12, 2020

Is Resilience Overrated?

I want people to be proud of themselves for being resilient. I just don't want it to be the only option.

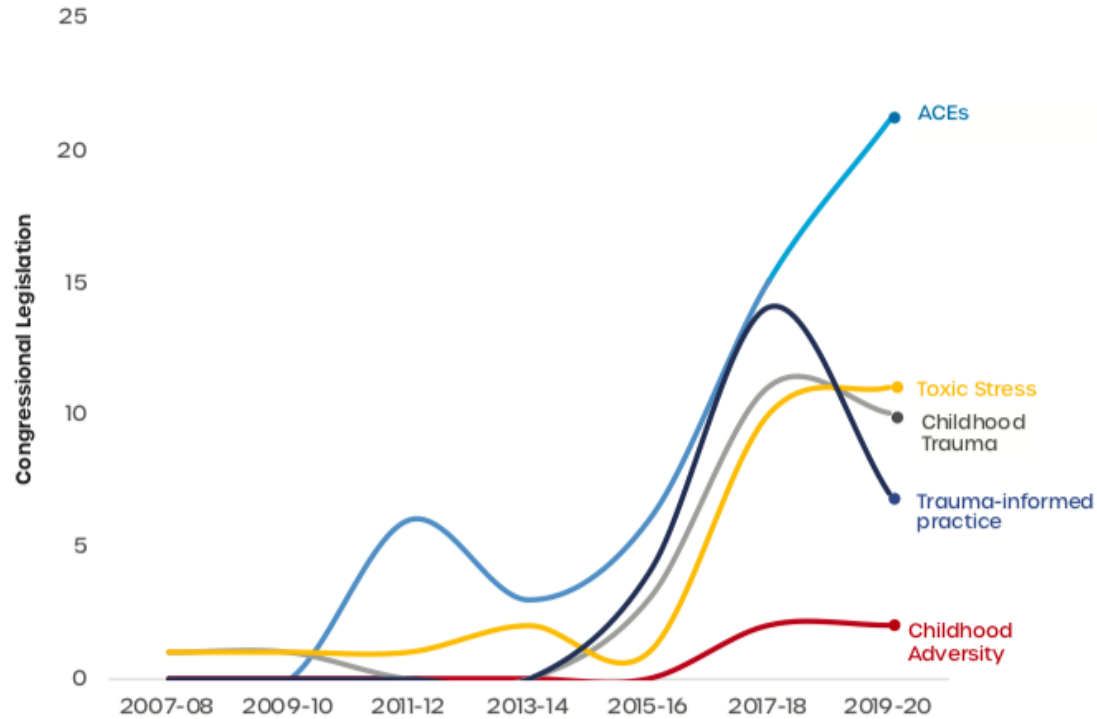


FIGURE 2. Occurrences of key terms in legislation introduced in the California State Legislature, 2007-2018.



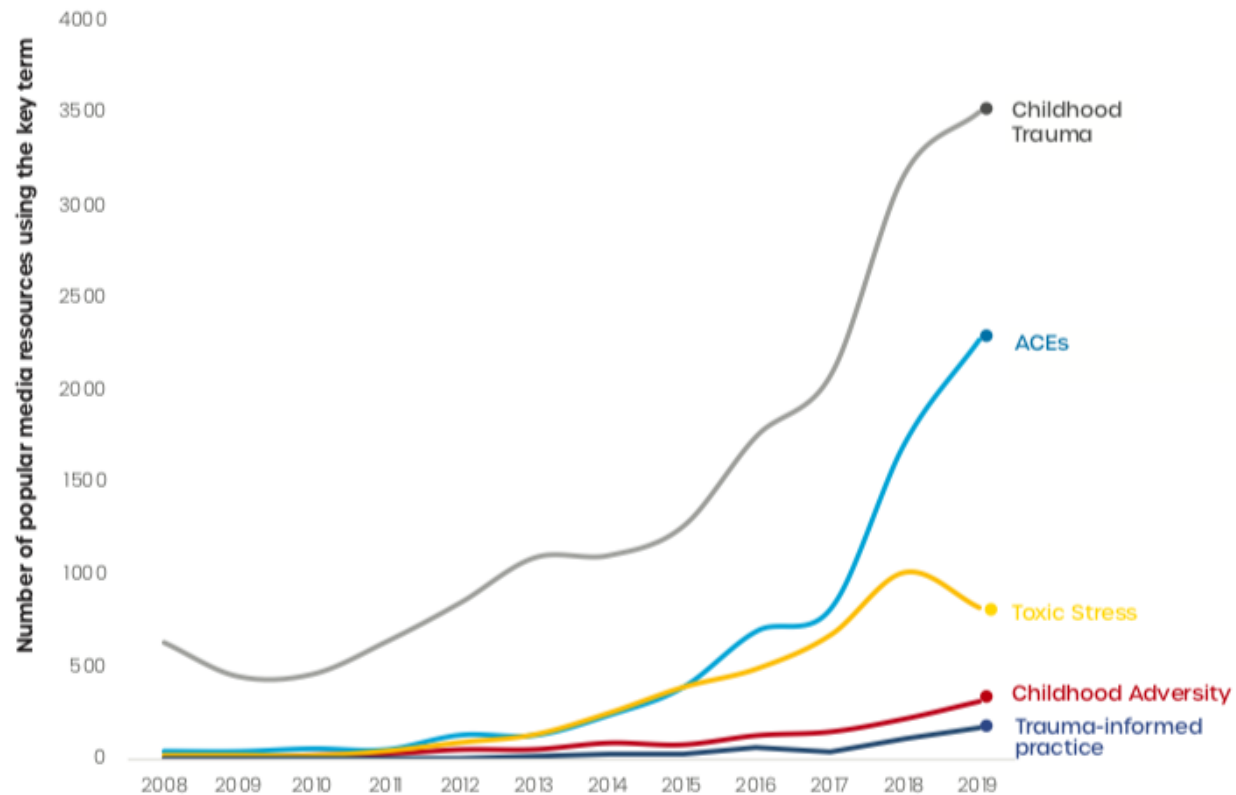
Source: JSI Analysis of California Legislative Information Database, 2020.

FIGURE 3. Occurrences of key terms in federal legislation introduced in Congress, 2007-2020.



Source: JSI Analysis of Congress.gov Database, 2020.

FIGURE 5. Occurrences of key terms in popular media, 2008-2019.



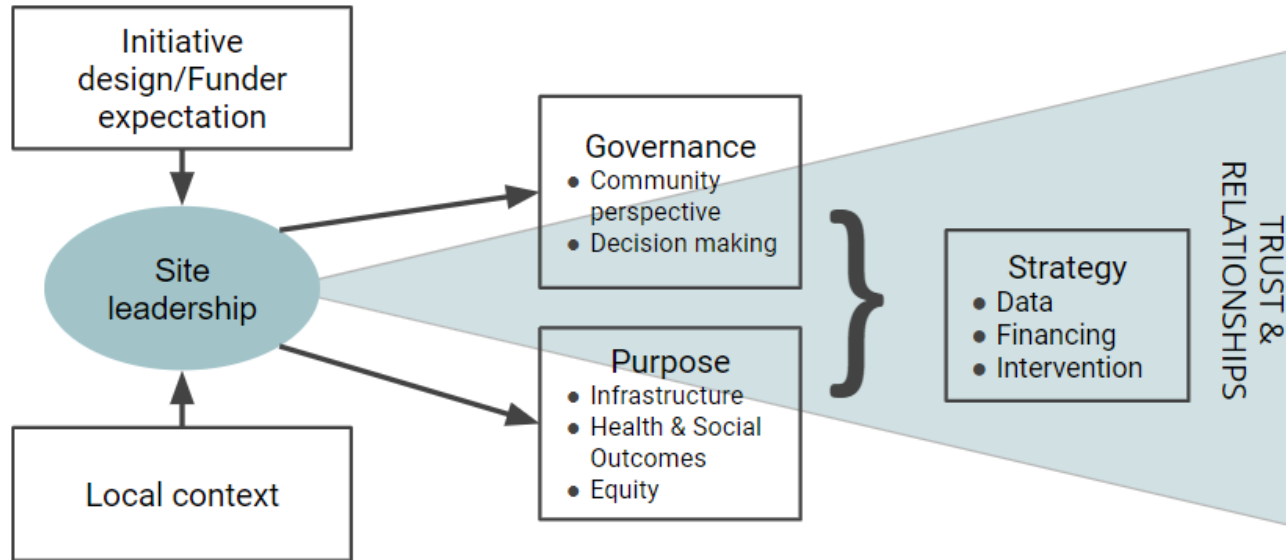
Source: JSI Analysis of Nexis Uni (Lexis Nexis) database, 2020.



04

Collaboratives move at the
speed of trust

“If you want to go fast,
go alone. If you want to
go far, go together.”





Difficult conversations about power, resources, and equity are growth opportunities.

Everyone does not come to the table with the same amount of power.



Measure it



Be explicit about decision making (move from community engagement to partnership)

QUESTIONS?

Jeremy Cantor



jeremy_cantor@jsi.com



@jeremy_cantor

Erin Shigekawa



erin_shigekawa@jsi.com



@erin_shig

CREDITS: This presentation template was created by **Slidesgo**, including icons by **Flaticon**, and infographics & images by **Freepik**